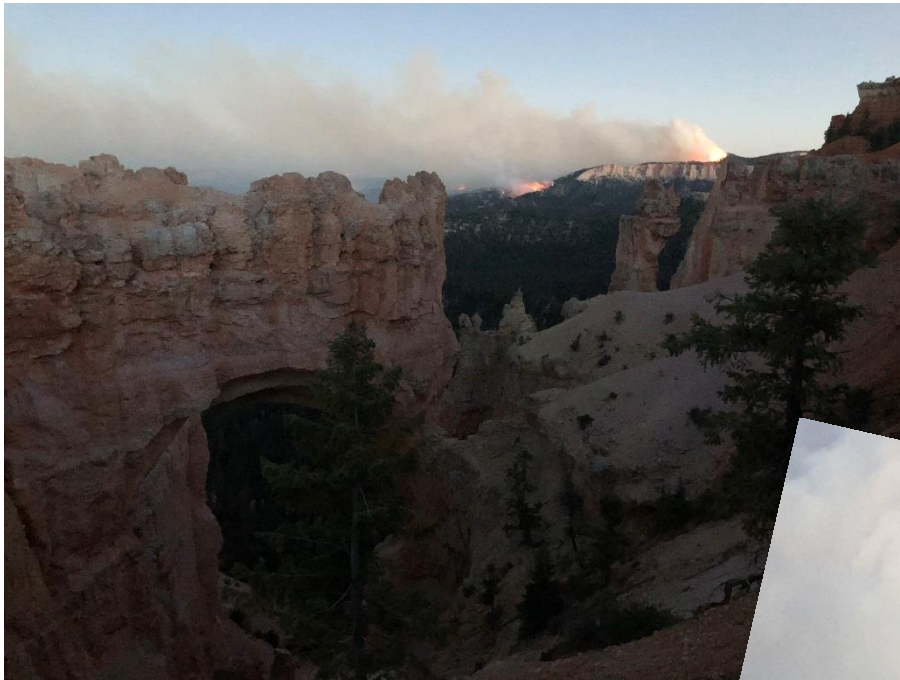
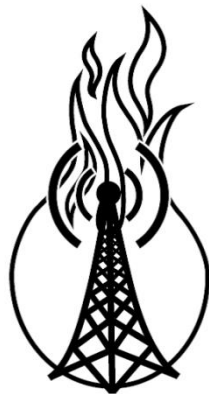


Color Country Interagency Fire Management Area



Riggs



Black Mountain

2018 Fire Season

Color Country Interagency Fire Center

Color Country Interagency Fire Center (CCIFC) response area is approximately 16.4 million acres of Federal, State, and Private Lands. CCIFC dispatches for the following agencies: Color Country District Office BLM (CCD) Grand Staircase Escalante National Monument BLM (GSENM), Arizona Strip District Office BLM (ASD), Dixie National Forest (DIF), Zion National Park (ZIP), Glen Canyon National Recreation Area (GLP), Bryce Canyon National Park (BRP), Cedar Breaks National Monument (CBP), Grand Canyon-Parashant (PAP), Vermillion Cliffs National Monuments BLM (ASD), Pipe Spring National Monument (PIP), Southern Paiute Field Office BIA (SPA), Fish and Wildlife Services (FWS), Utah Division of Forestry, Fire, and State Lands (SWS) which includes the five southwest counties of Utah, and State of Arizona (A2S2).

The 2018 started dry, with moderate to high IA about mid-May and into early July. The Energy Release Component (ERC) climbed between the 80th - 100th percentiles. The ERCs dropped below the seasonal average due to the onset of the monsoons in mid-July. The ERCs recovered to near record highs for the month of September. There were 310 fires for 23,119 acres this season. Human caused fires accounted for 26% of all fires and 77% of the total acres burned. The Southwest State of Utah accounted for 47% of the human caused fires. The Dixie National Forest accounted for 66% of Human caused acres burned. Color Country resources responded to 508 smoke reports this season; 310 wildfires, 14 incorporated assists, and 184 false alarms. Color Country mobilized two T3 IMTs. Chet Hatch's T3 IMT was assigned to the West Valley fire (on the Pine Valley R.D.) and then transitioned to Brook Chadwick's T2 team. Sean Peterson's T3 IMT was assigned to the Black Mountain fire on the Cedar City Field Office.

Color Country Interagency Fire Management Area was the host of 5 exclusive use aircraft for 2018: one - T1 (HT-715) helicopter at CDC, one -T3 (H-7BS) Helicopter at SGU, one -Air Attack (AA-0FD) at CDC, and 2 SEATs at CDC (T-865 & T-874). Color Country Air Center / Cedar City Tanker Base pumped 696,021 gallons of retardant.

CCIFC processed approximately 5,677 ROSS orders for aircraft, overhead, crews, equipment, and supplies. CCIFC was unable to fill (UTF) 326 local and non-local incident orders. These orders do not include local resources sent during initial attack, which are not captured within ROSS. CCIFC supported incidents outside of the CCIFC area by sending 681 - Overhead, 95 – Aircraft, 15 – Crews, 6 – Camp Crews, and 65 - Engines off-unit. We appreciate all those who took assignments and helped with the fire effort.

CCIFC Averages	Natural Fires	Natural Acres	Human Fires	Human Acres	Fires	Acres
2018 Fire Season	229	5,255	81	17,864	310	23,119
5 Year Average	185	3,821	92	18,586	277	22,408
10 Year Average	430	31,569	100	21,177	358	30,589

Color Country Fire Management Area

16,383,638 Acres

<u>Agency</u>	<u>Acres</u>
Color Country District BLM	5,412,871
Grand Staircase Escalante NM	<u>1,866,179</u>
CCD Total	7,279,050
Arizona Strip District BLM	2,274,478
Grand Canyon- Parashant NM	1,048,497
Vermillion Cliffs NM	<u>293,680</u>
ASD Total	3,616,655
Arizona - State	206,209
Arizona - Private	<u>137,928</u>
Arizona Total	344,137
Southern Paiute Agency	
Kaibab Reservation	120,798
Shivwits Reservation	28,154
Cedar Band Reservation	2,050
Indian Peaks Band Reservation	<u>425</u>
SPA Total	151,427
Dixie National Forest	1,884,467
Forestry, Fire, and State Lands	101,720
Unincorporated Private	<u>1,359,216</u>
SWS Total	1,460,936
Zion National Park	148,732
Glen Canyon National Recreation Area	1,254,429
Cedar Breaks National Monument	6,155
Bryce Canyon National Park	35,968
Pipe Springs National Monument	40
Rainbow Bridge National Monument	160
Lake Mead National RA (inside CCIFC Area)	<u>201,482</u>
NPS Total	1,646,966

Reportable Accidents / Injuries by Agency

(Agency employees injured within CCIFMA)

State of Utah:

None

Dixie National Forest:

None

Color Country BLM:

1 – Wrist Sprain – Lifting - In Dispatch

Arizona Strip BLM:

None

Southern Paiute Agency:

1 – Ankle Roll on Black Mountain fire

National Park Service:

None

2018 CCIFC FIRE STATISTICS



DIXIE NATIONAL FOREST						
Ranger District	Natural Fires	Natural Acres	Human Fires	Human Acres	Total Fires	Total Acres
Pine Valley	13	30.2	3	11,771.4	16	11,802
Cedar City	12	2.3	2	1.1	14	3
Powell	5	978.4	2	17.1	7	996
Escalante	11	1.5	0	0.0	11	2
Total	41	1,012	7	11,790	48	12,802



UTAH DIVISION OF FORESTRY, FIRE, AND STATE LANDS						
County	Natural Fires	Natural Acres	Human Fires	Human Acres	Total Fires	Total Acres
Beaver	4	59.4	4	1.5	8	61
Garfield	4	0.6	2	0.2	6	1
Kane	21	19.8	3	0.3	24	20.1
Iron	13	4.4	24	618.5	37	622.9
Washington	12	4.2	6	40.3	18	46
Total	54	88	39	661	93	749



COLOR COUNTRY BLM						
Field Office	Natural Fires	Natural Acres	Human Fires	Human Acres	Total Fires	Total Acres
Cedar City	34	1,117.2	8	5,404.2	42	6,521
GSENM	3	7.2	0	0.0	3	7
Kanab	51	142.6	5	2.2	57	145
St. George	8	2.3	6	1.2	14	3
VCNM	0	0.0	0	0.0	0	0
Total	96	1,290	20	5,408	116	6,697



NATIONAL PARK SERVICE						
Park/NM NRA	Natural Fires	Natural Acres	Human Fires	Human Acres	Total Fires	Total Acres
Bryce Canyon	4	1,149	0	0.0	4	1,149
Cedar Breaks	0	0.0	0	0.0	0	0
Glen Canyon	0	0.0	0	0.0	10	3
Zion	6	39.5	5	0.5	11	40
Total	10	1,188	5	1	15	1,189



ARIZONA STRIP BLM						
Field Office / Monument	Natural Fires	Natural Acres	Human Fires	Human Acres	Total Fires	Total Acres
Arizona Strip	12	1,651.2	8	4.9	20	1,656
GCPNM	11	24.6	0	0.0	11	25
VCNM	3	0.3	0	0	3	0.3
Total	26	1,676	8	5	34	1,681



SOUTHERN PAIUTE AGENCY						
	Natural Fires	Natural Acres	Human Fires	Human Acres	Total Fires	Total Acres
Arizona	1	0.1	1	0.2	2	0.3
Utah	1	0.4	1	0.5	1	1
Total	2	1	2	1	3	1



COLOR COUNTRY INTERAGENCY FIRE CENTER						
	Natural Fires	Natural Acres	Human Fires	Human Acres	Total Fires	Total Acres
Total	229	5,255	81	17,864	310	23,119

Large Fires

(100 acres or more/Team Fires)

Name	Type	Start Date	Org.	ASD Acres	CCD Acres	DIF Acres	NPS Acres	SPA Acres	SWS Acres	Total Acres	Incident Commander
West Valley	T2	6/27	DIF			11,771				11,771	Chadwick's T2 IMT
Black Mountain	T3	6/28	CCD		5,326				272	5,634	Petersons T3 IMT
MoKaac	T4	7/8	ASD	1,650						1,650	Richards
Horse Valley	T4	7/20	CCD		1,072				59	1,131	Julander Bartin (T)
Riggs	T3	8/25	DIF		126	559	702			1,387	Julander Frandsen (T)
Lonely	T3	9/6	BRP		7	419	446			872	Julander Frandsen (T)

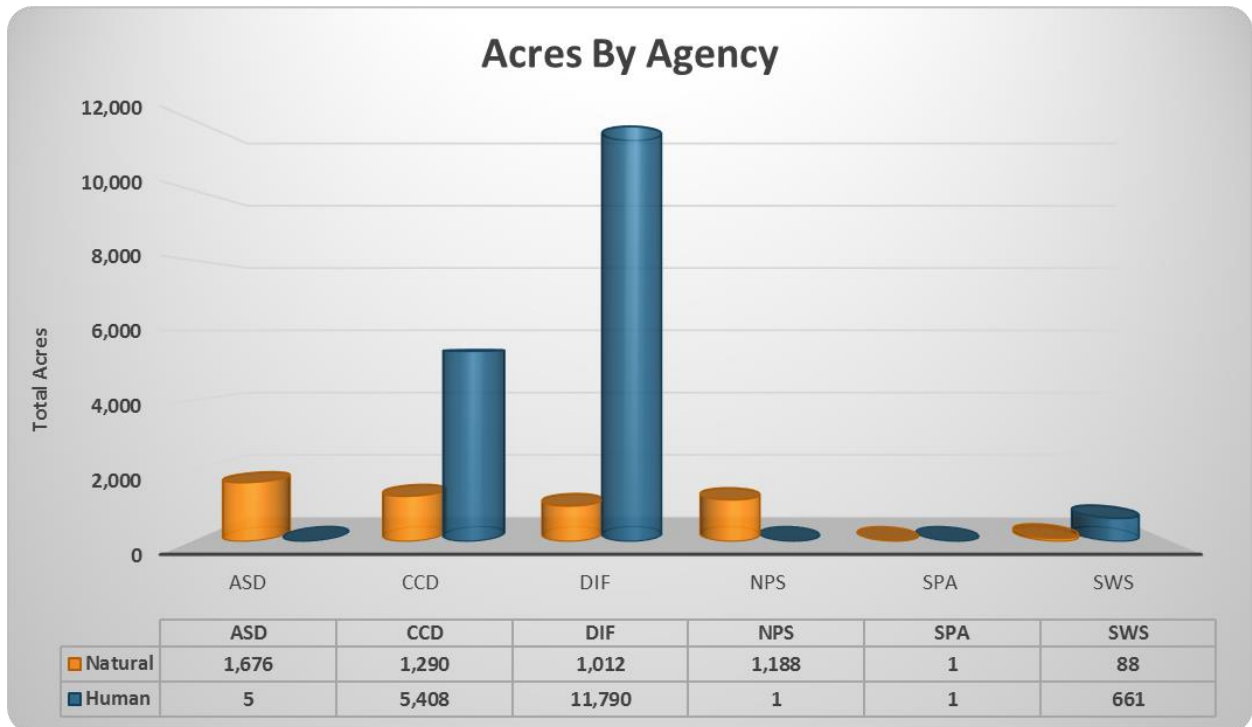
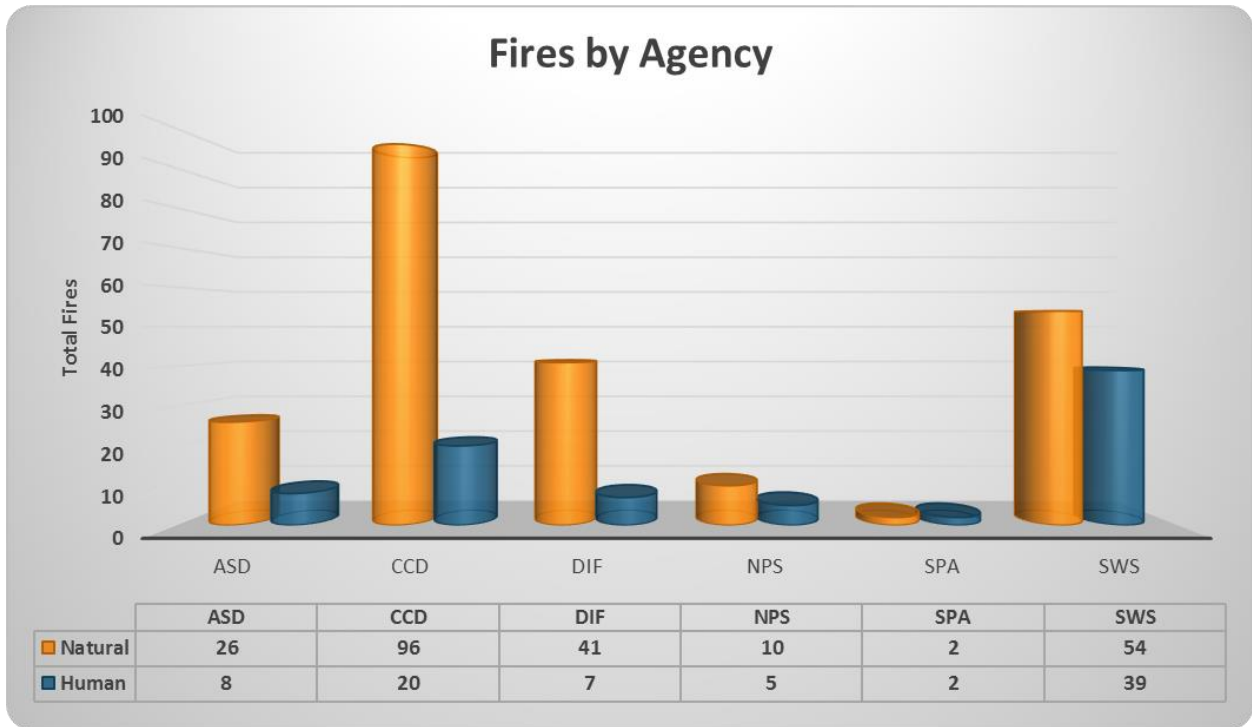
The West Valley fire started June 27th on the Pine Valley R. D. of the Dixie National Forest. It a human caused fire. The fire was located approximately four miles west northwest of Pine Valley, UT. Chet Hatch's T3 IMT assumed command of the fire on June 28th. The fire transitioned to Brook Chadwick's T2 IMT on June 30th. Fires final size was 11,771 acres.



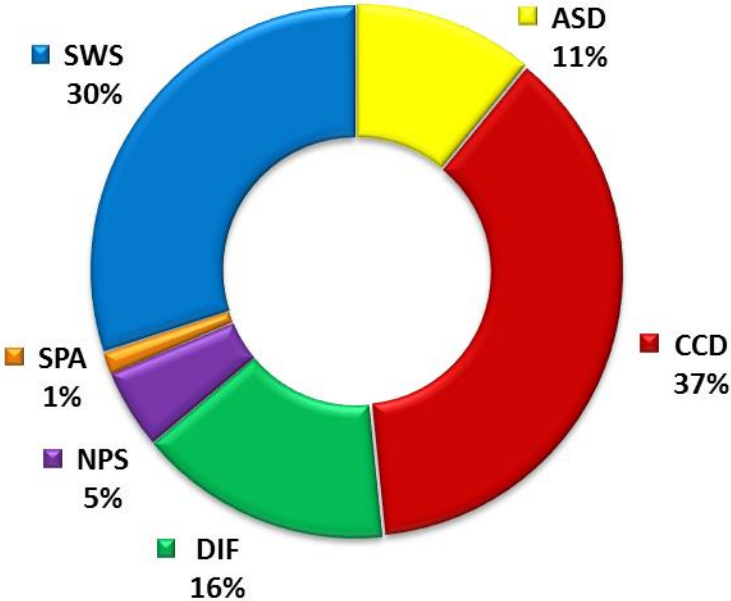
The Black Mountain fire was a human caused fire that started June 28th on the Cedar City Field Office. The fire burned BLM and State lands. Shawn Peterson's T3 IMT assumed command of the fire June 29th. The fire transitioned to Dameon Julander as an ICT4 on July 4th. The fire's final size was 5,634 acres.



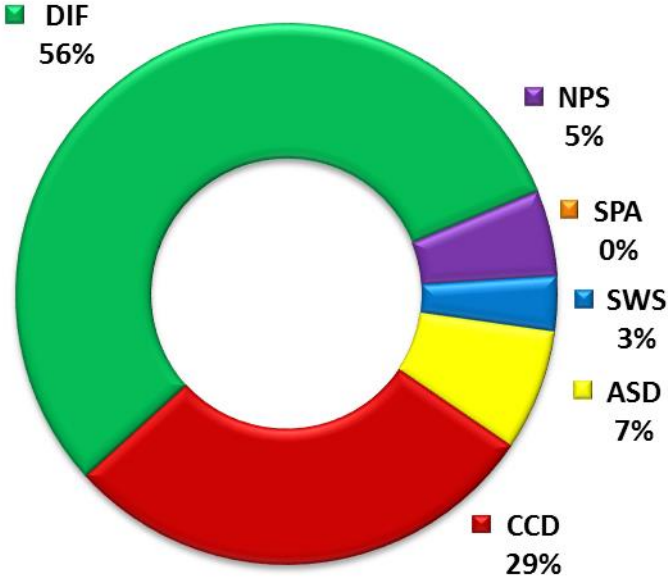
CCIFC 2018 Fire Season



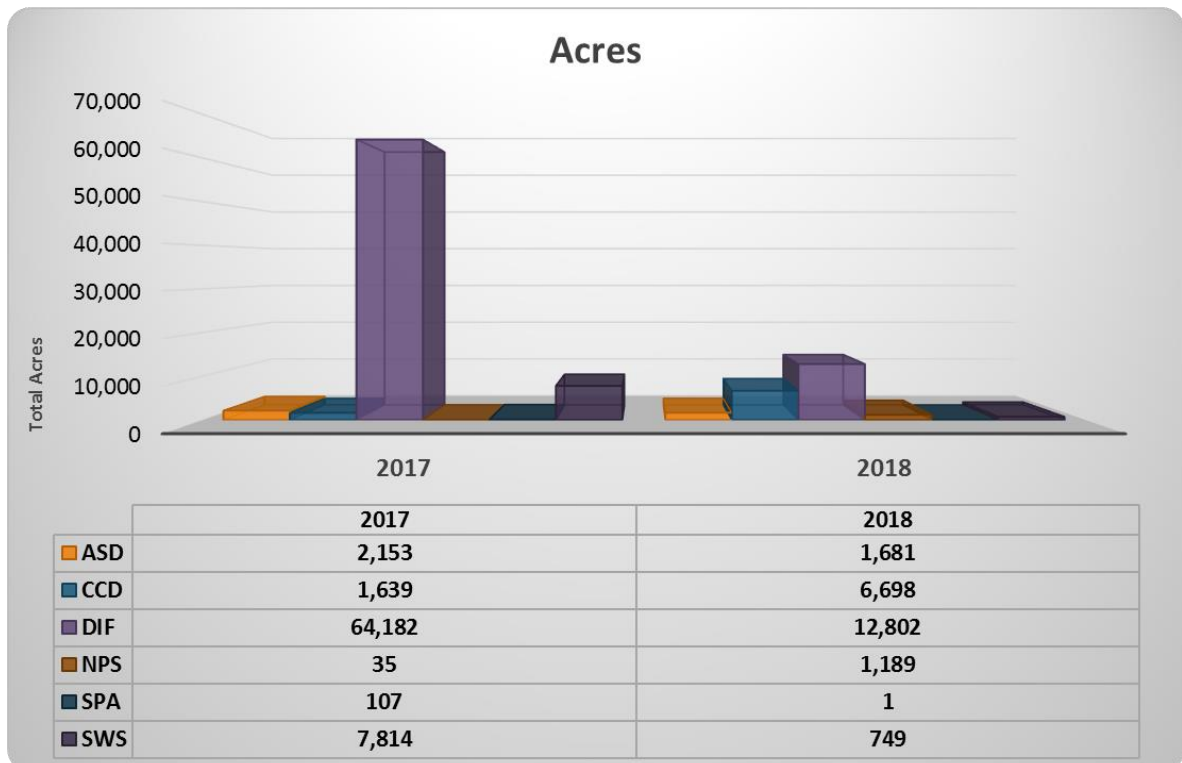
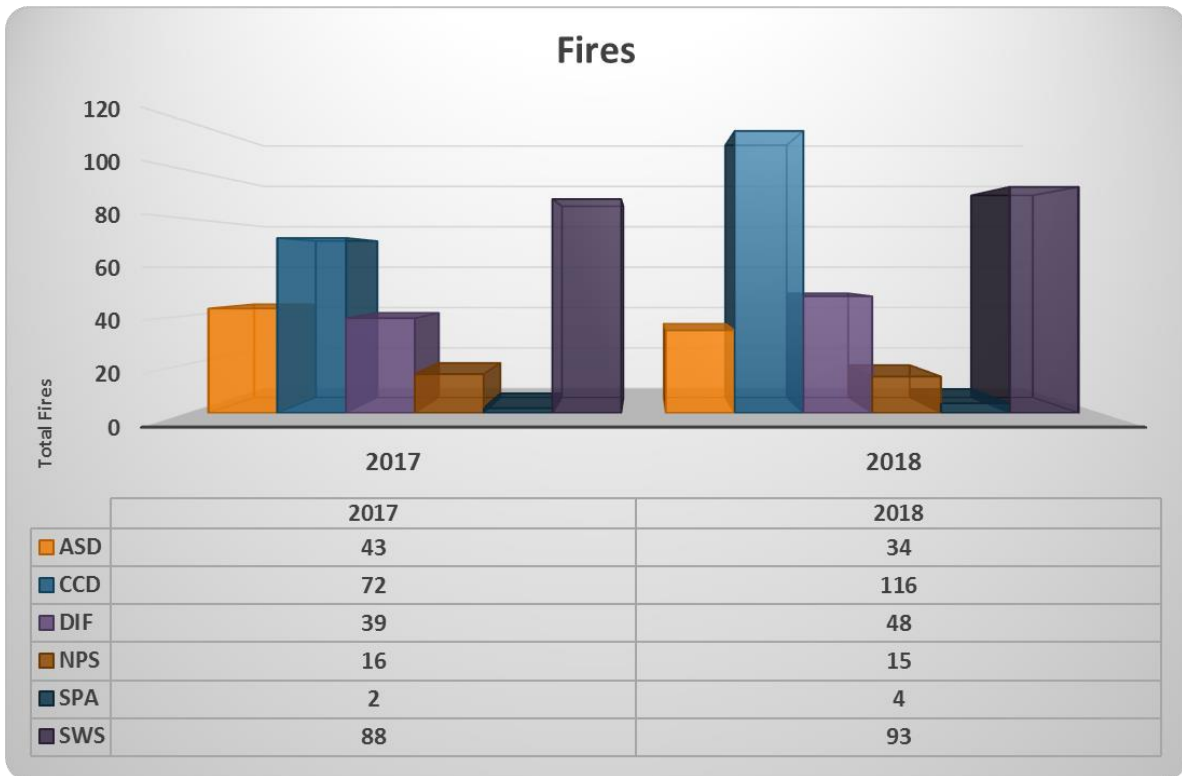
Percent of Total Fires by Agency



Percent of Total Acres By Agency



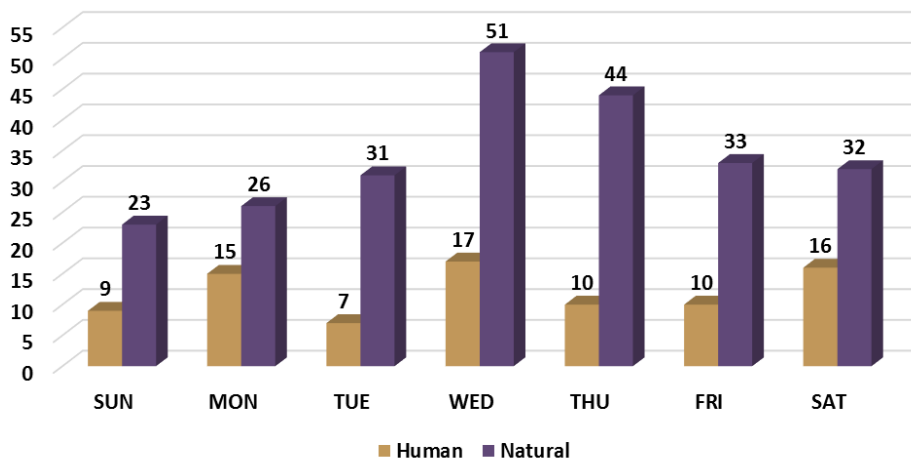
Two-Year Comparison



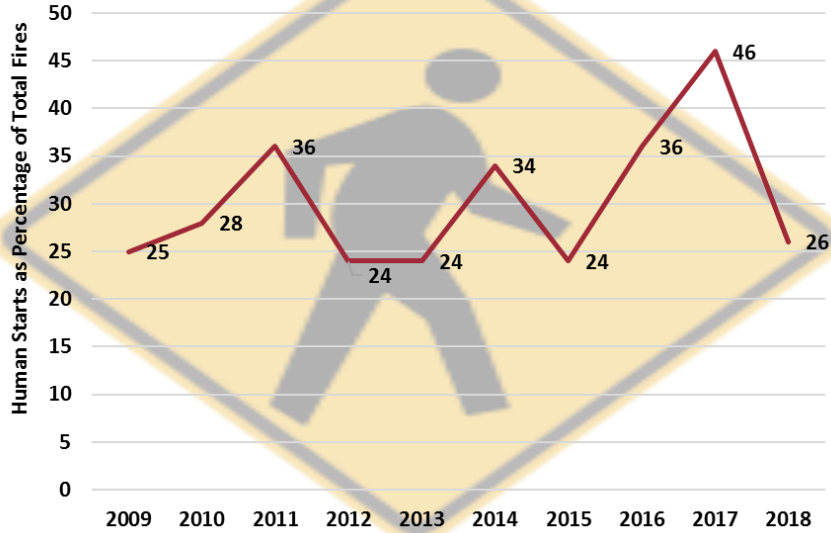
Incorporated Assists

Date	Name	Natural Fires	Natural Acres	Human Fires	Human Acres
	Beaver County				
Total		0	0	0	0.0
	Garfield County				
Total		0	0	0	0.0
	Kane County				
Total		0	0	0	0.0
	Iron County				
14-Apr	Coal Creek Trail			1	0.3
10-May	Corner			1	0.1
16-May	Fairway	1	0.5		
30-May	Trailwvr			1	0.3
4-Jun	2400 North			1	1.5
11-Jun	East Canyon Park			1	0.1
30-Jun	Parowan Assist 001			1	0.1
15-Sep	2400 North			1	0.3
15-Sep	291 West			1	0.3
Total		1	0.5	8	2.8
	Washington County				
30-Apr	White Reef			1	1.0
10-May	Trail Ridge			1	1.0
26-May	LaVerkin Park			1	0.1
30-Jun	Cotton Wash			1	0.5
Total		0	0	4	2.6
Total	Utah Incorporated Assists	1	0.5	12	5.4

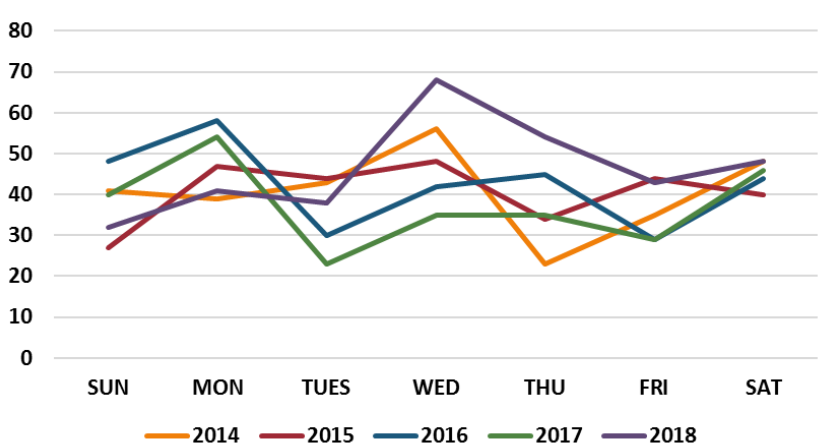
Wildland Fires By Day of the Week



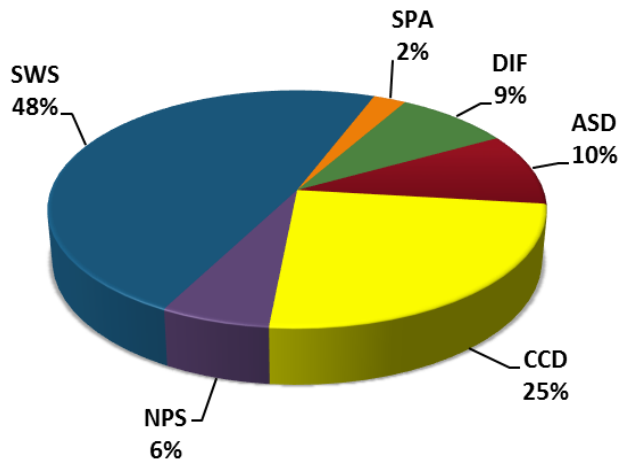
HUMAN CAUSED TRENDS



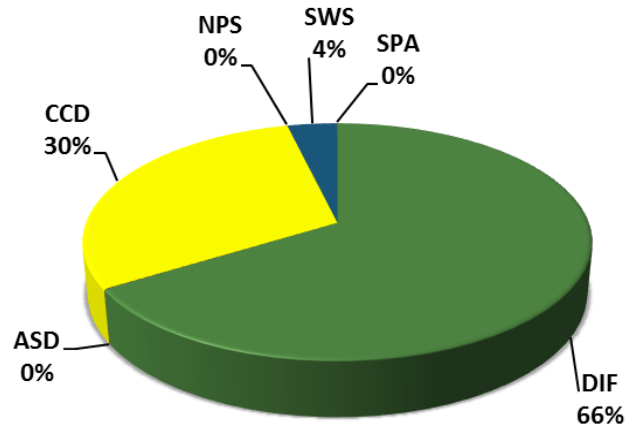
Human Starts 5 Year Trend



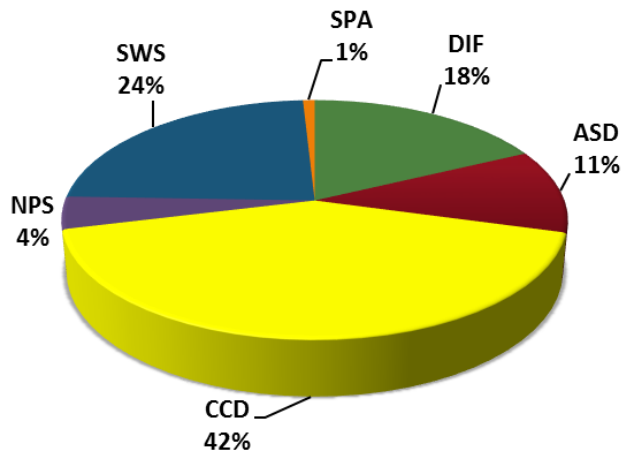
Human Caused Fires



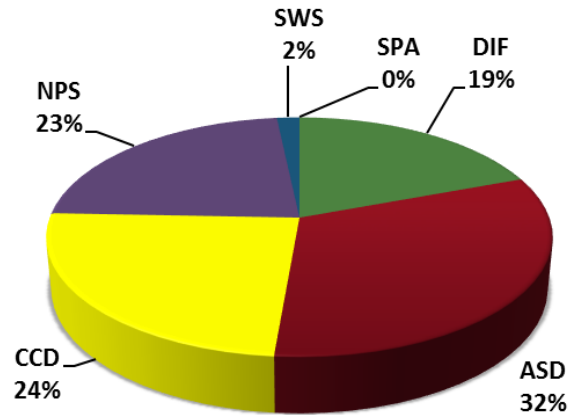
Human Caused Acres



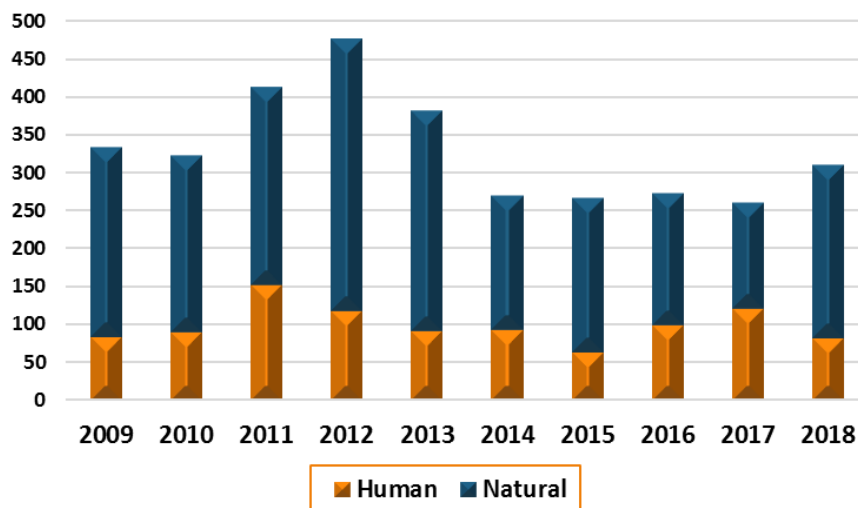
Natural Caused Fires



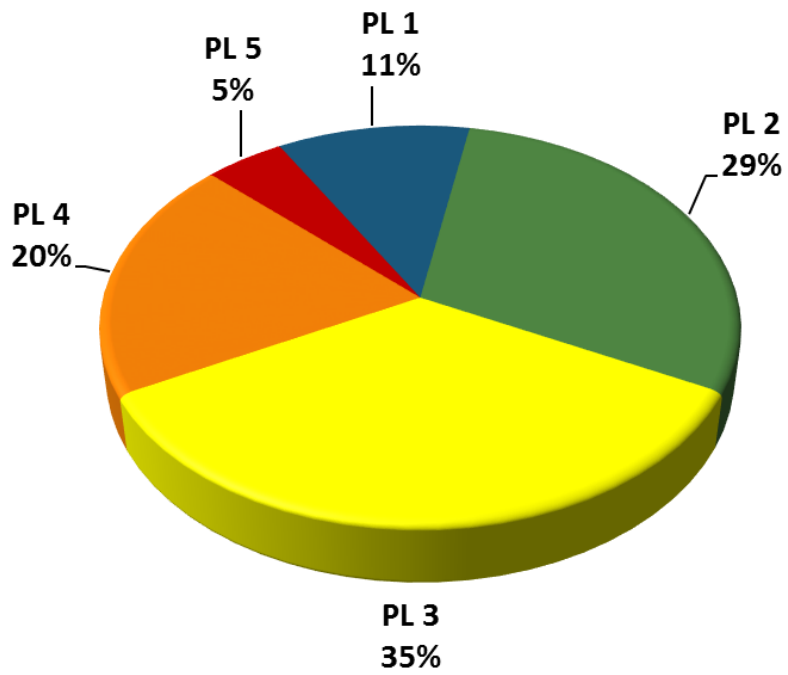
Natural Caused Acres



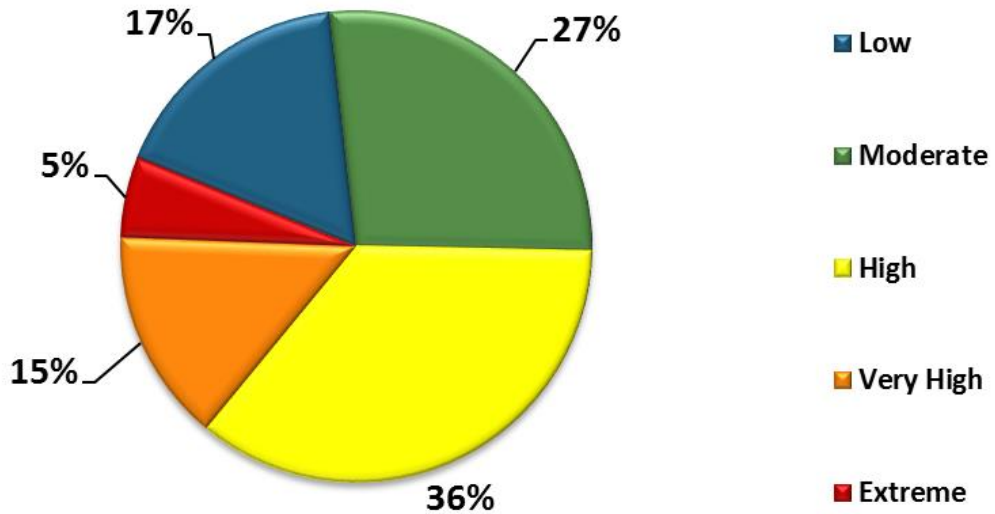
10 Years



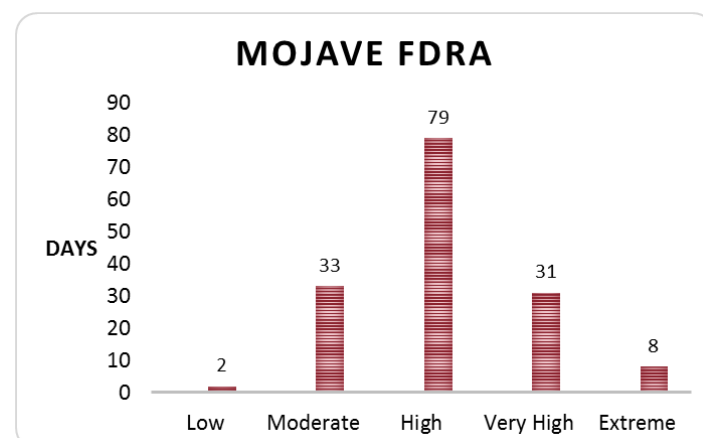
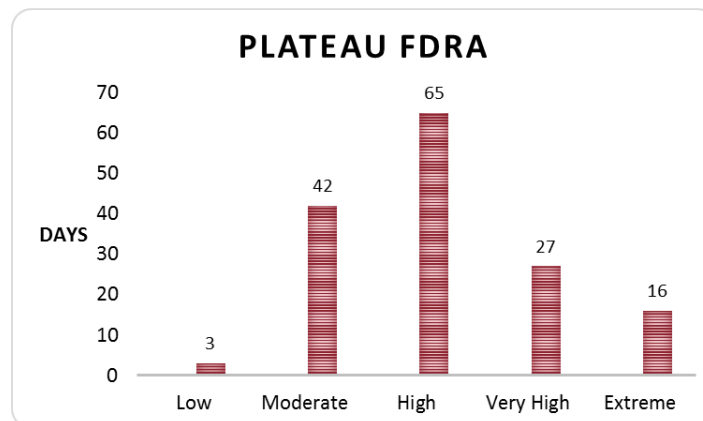
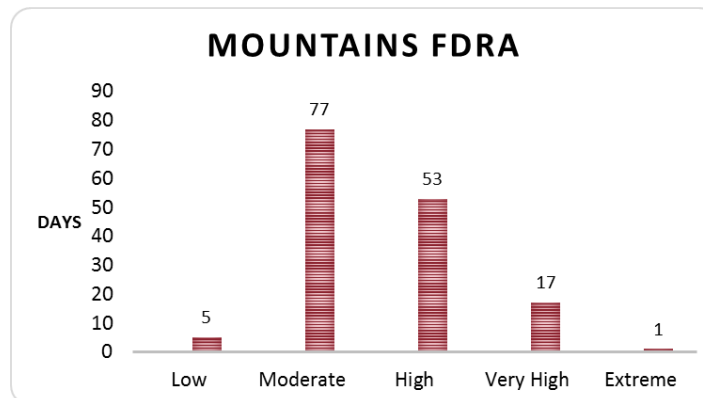
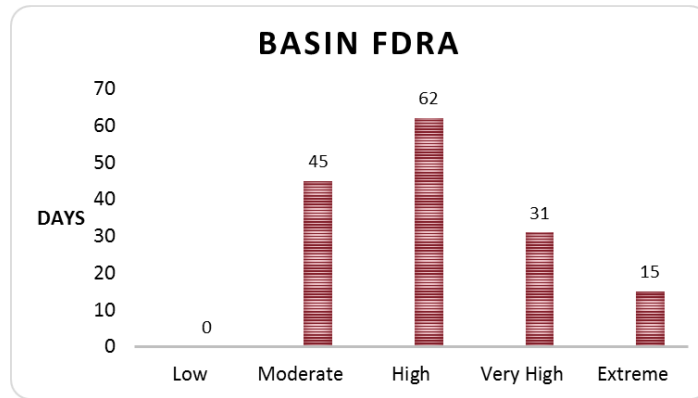
CCIFC Preparedness Level



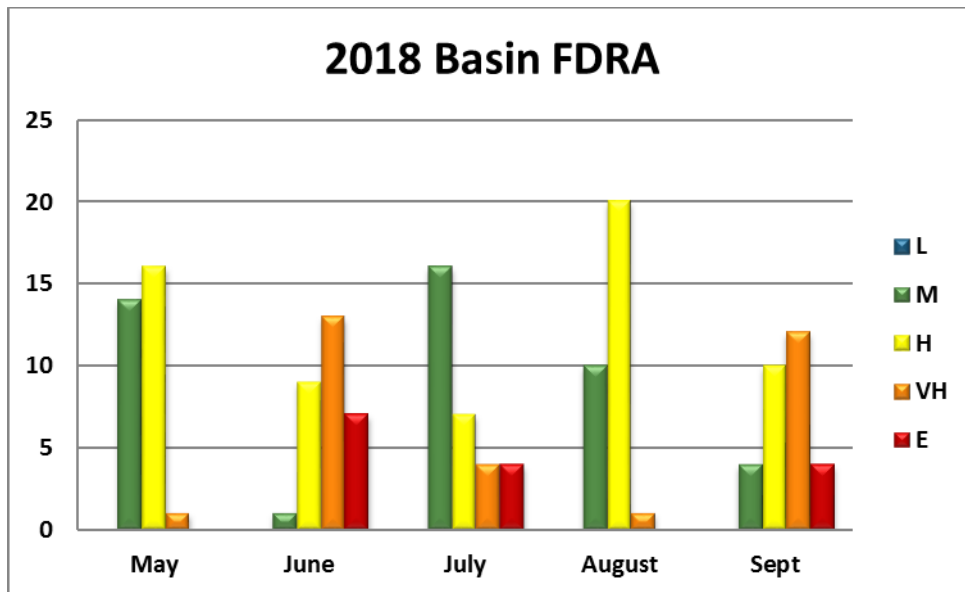
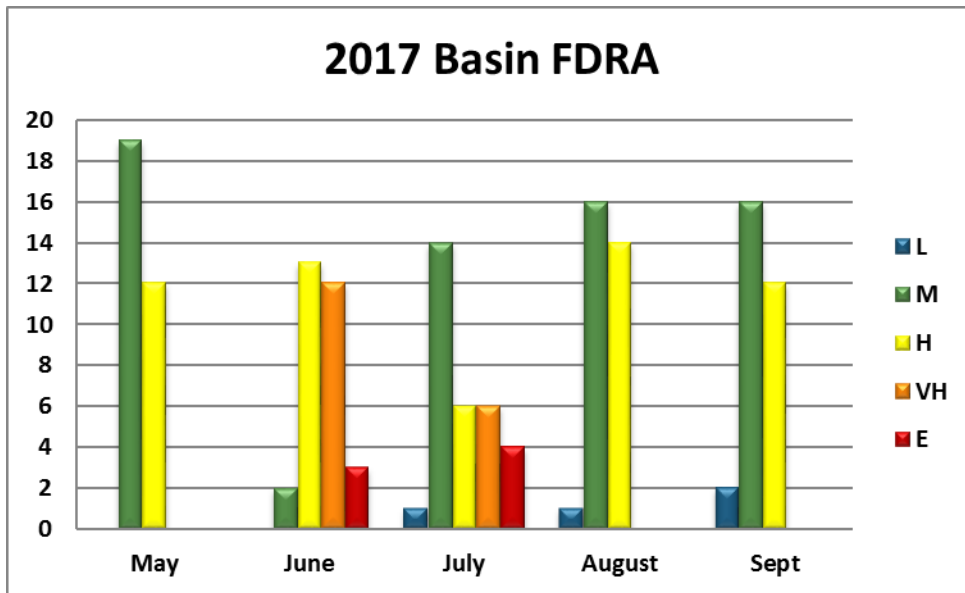
Percentage of Season by Fire Danger Rating



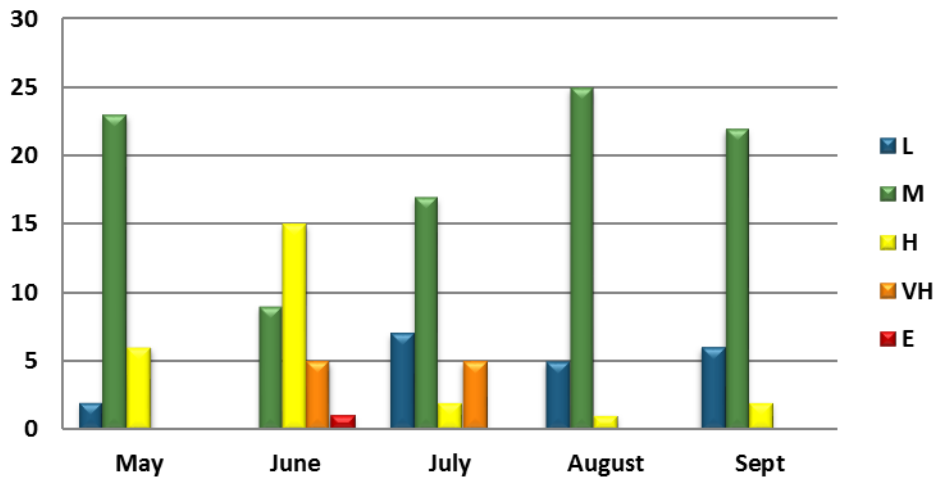
Fire Danger Rating Areas



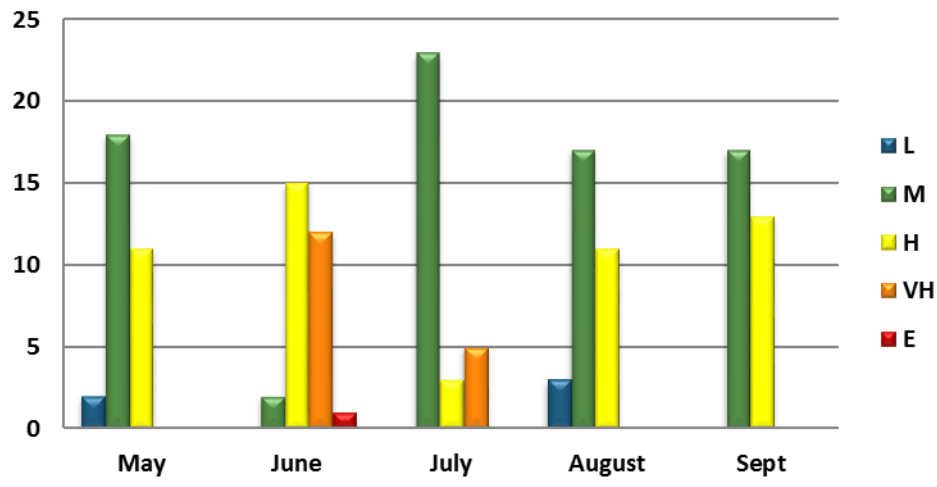
2017 & 2018 FDRA Comparison



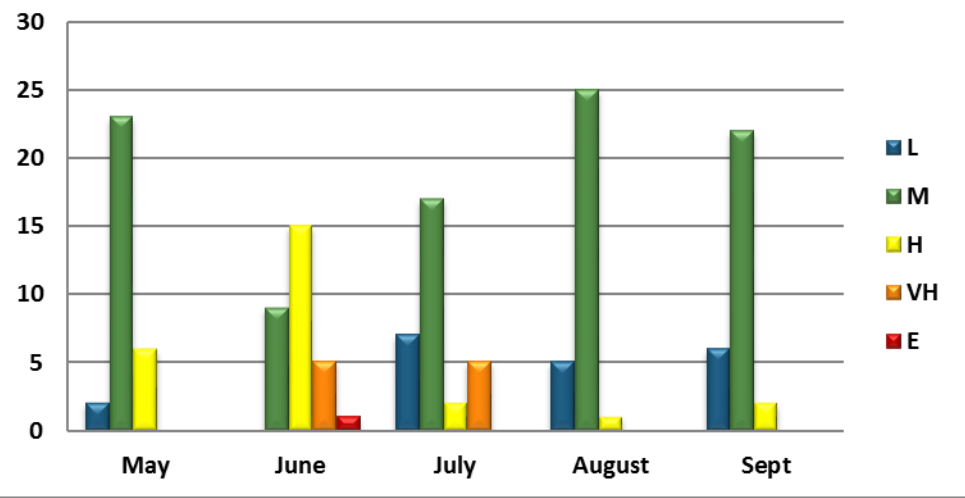
2017 Mountains FDRA



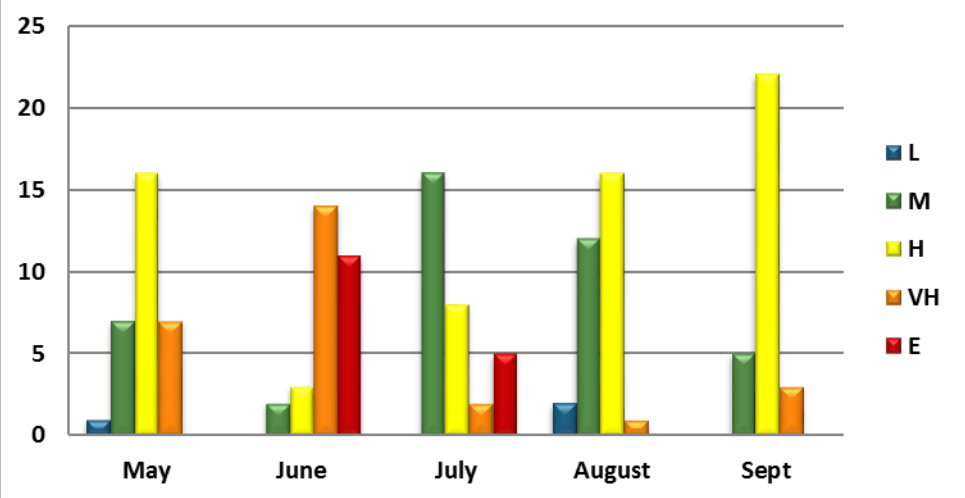
2018 Mountains FDRA



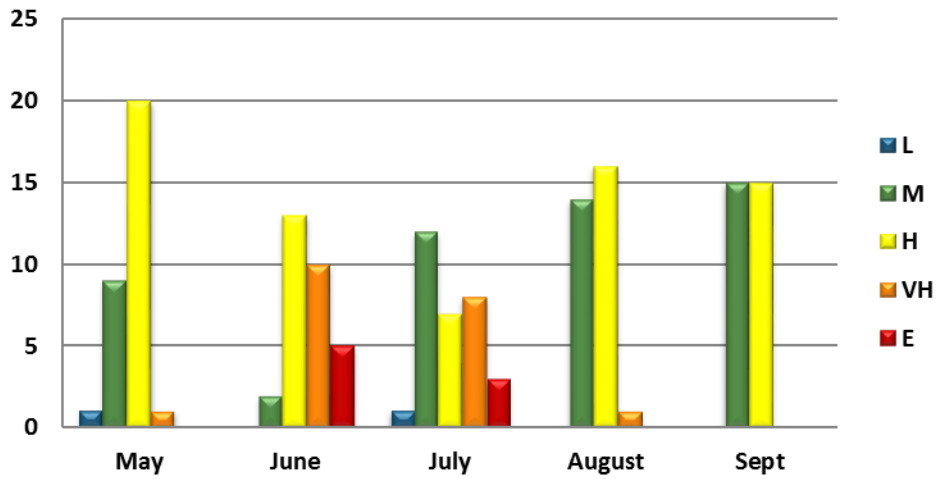
2017 Plateau FDRA



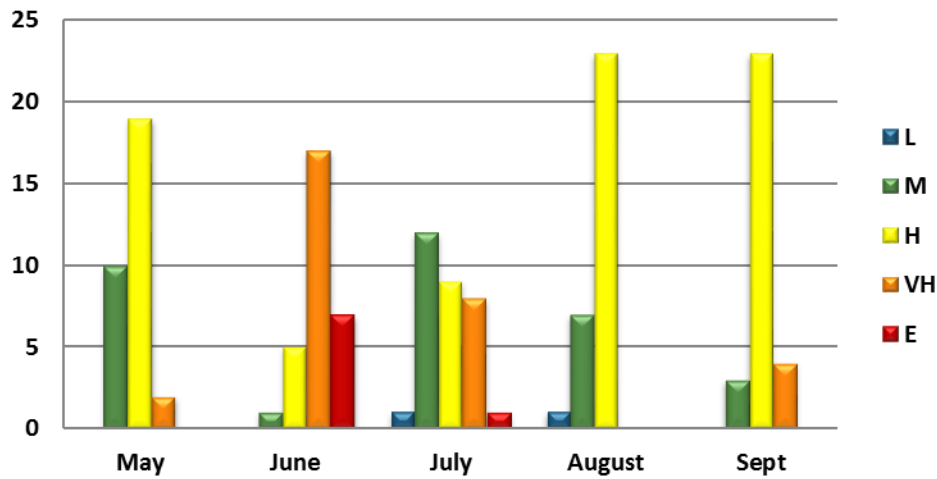
2018 Plateau FDRA



2017 Mojave FDRA



2018 Mojave FDRA



Prescribed Burns

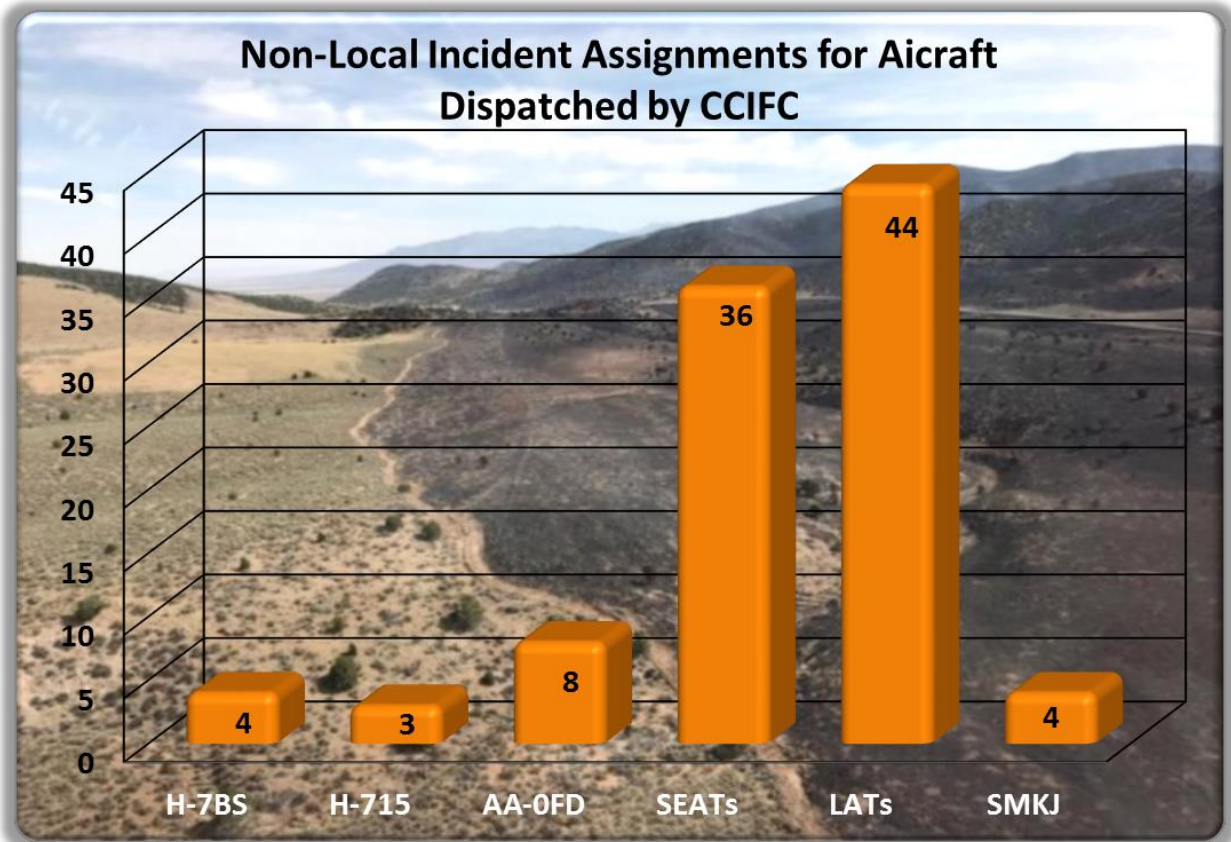
Calendar year prescribed fire stats are as reported to CCIFC.

As of 12/31/2018.

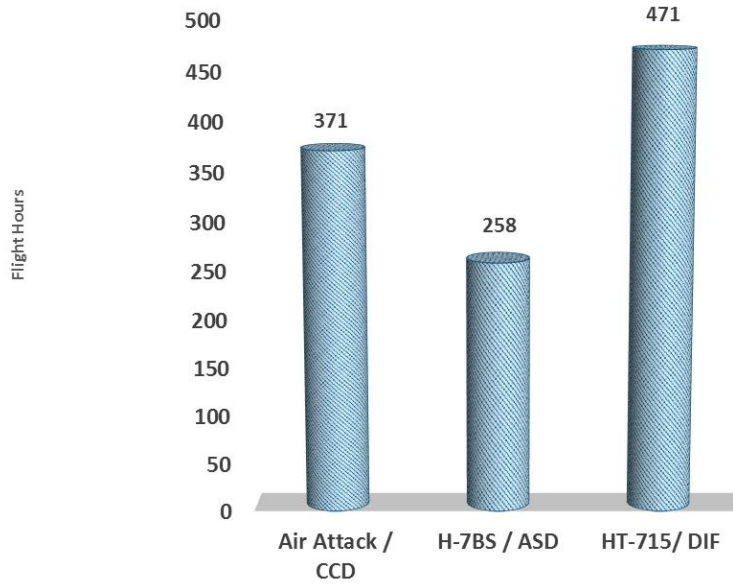
Agency	Number of RX	RX Acres
Dixie National Forest Total	19	3,701
Pine Valley Ranger District	1	38
Cedar City Ranger District	14	2,803
Powell Ranger District	3	779
Escalante Ranger District	1	81
Color Country BLM	1	1
State of Utah Total	16	299
Beaver County	1	47
Garfield County	2	18
Kane County	4	85
Iron County	6	16
Washington County	3	133
Arizona Strip BLM	2	72
Bryce Canyon National Park	1	15
Zion National Park	2	35
Total For CCIFC	40	4,122

Aircraft

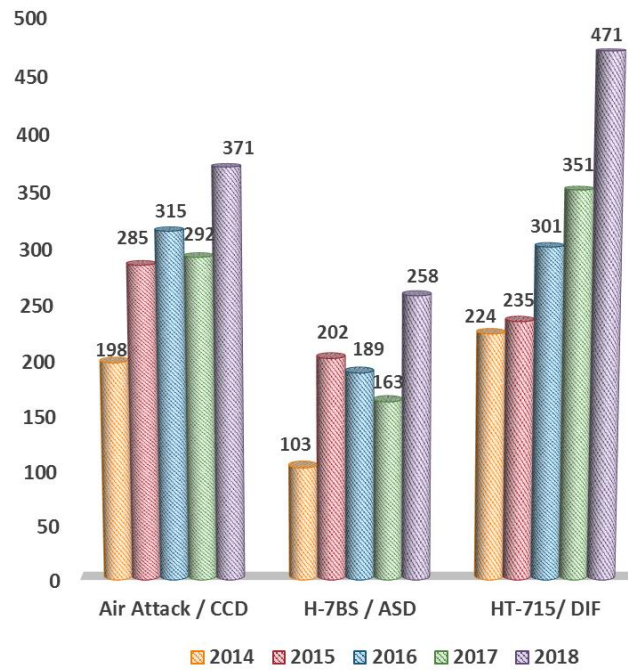
Color Country Interagency Fire Center filled 136 aircraft orders for non-local incidents in ROSS. These orders do not include all local resources sent during Initial Attack, which are not captured in ROSS.



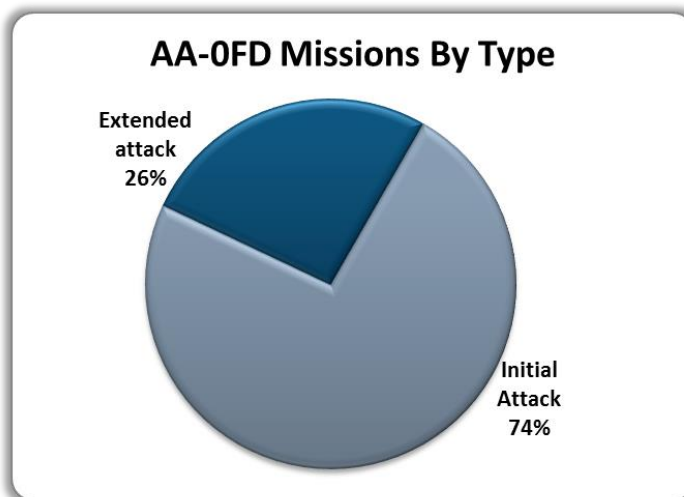
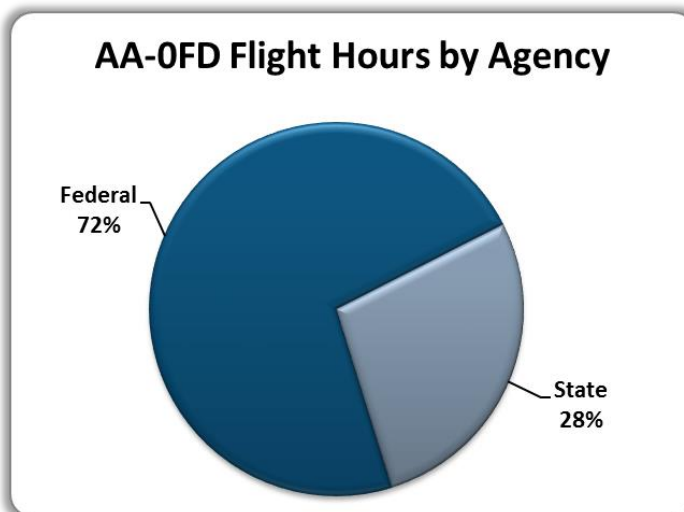
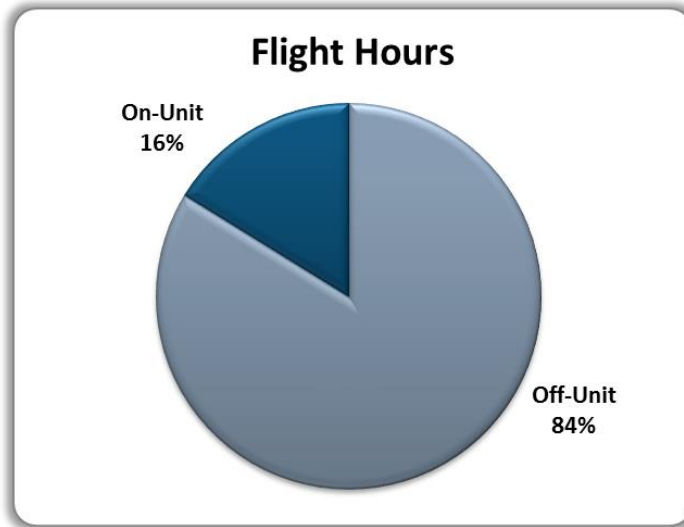
AIRCRAFT UTILIZATION



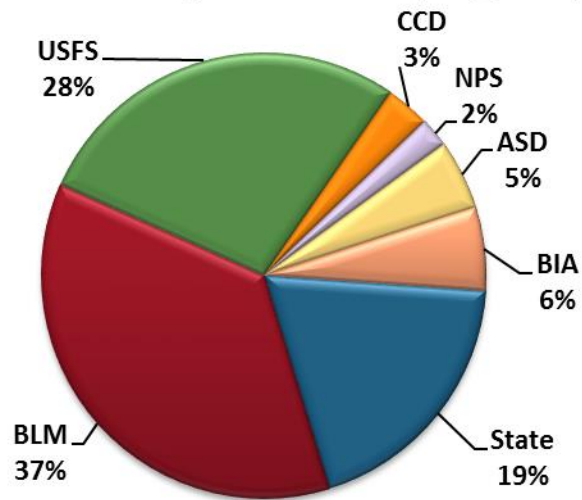
AIRCRAFT UTILIZATION 5YR. COMPARISON



Air Attack N690FD – Color Country BLM

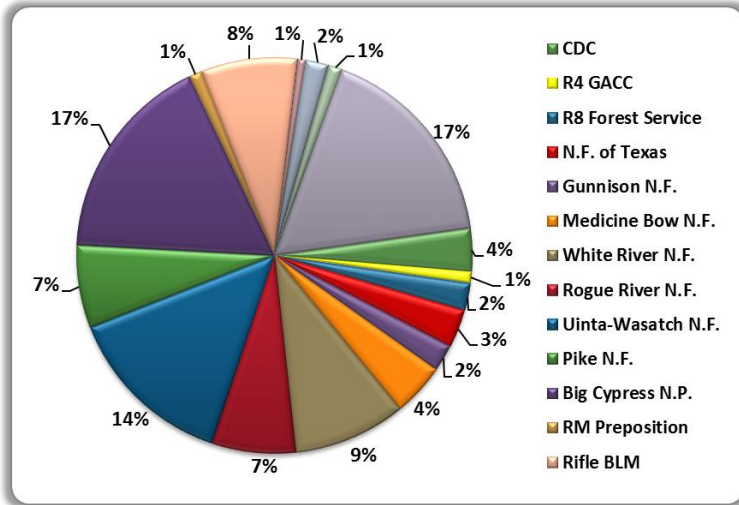


AA-OFD Flight Hours by Agency

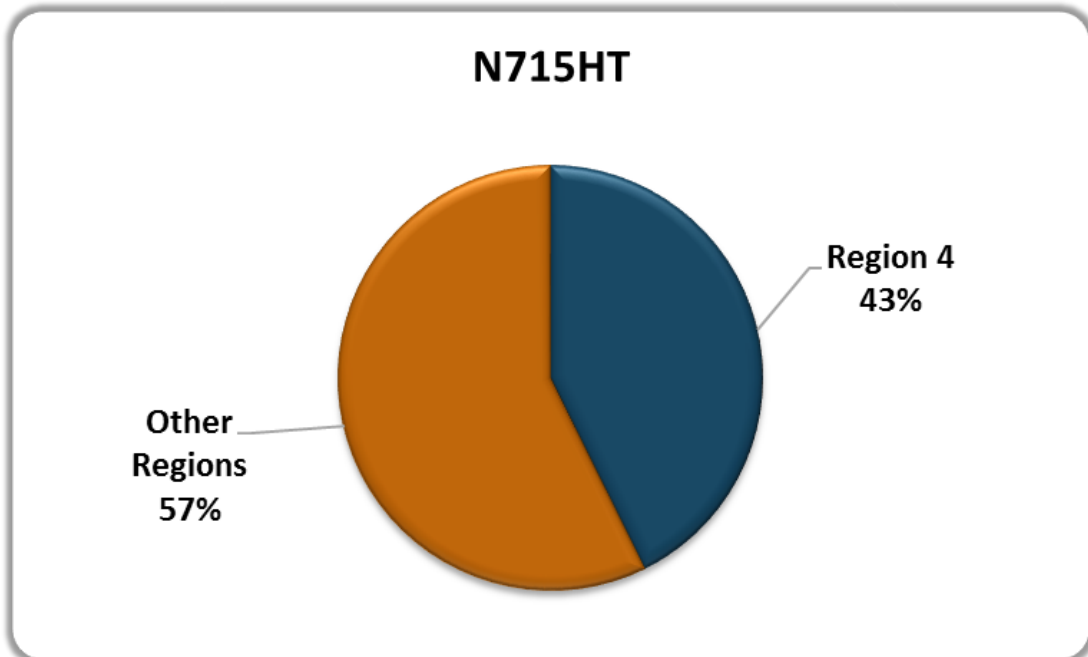


Number of Initial Attack Missions	59
Number of Extended Attack Missions	29
Total Number of Fires Flown	56
Numbers of Fires Flown In CCIFMA	21
Numbers of Fires Flown Out of CCIFMA	35
Contract	90 Days
Contract Extension	20 Days
Total Flight Hours	292
Total of Trainees	4

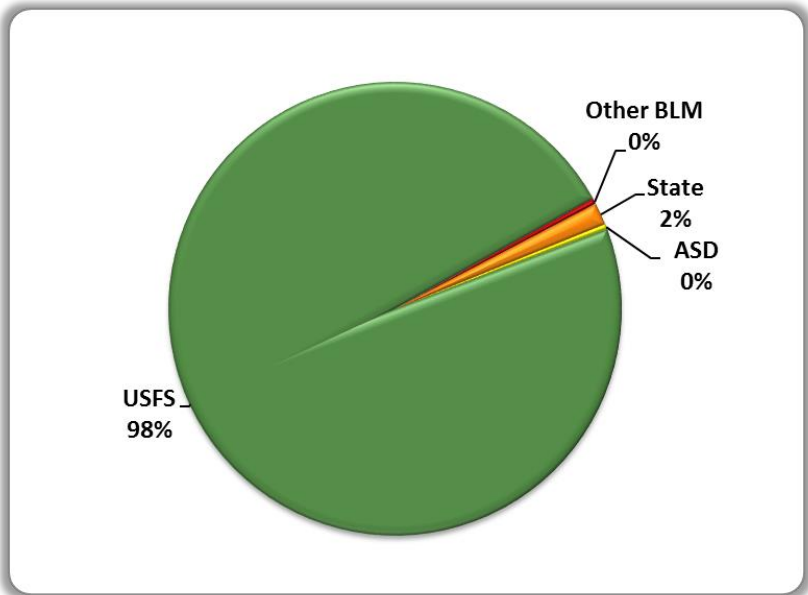
Helicopter N715HT – Dixie N.F.



Number of Initial Attack Fires	02
Number of Fires Supported	18
Contract	180 Days
Total Flight Hours	471
Water, gals	1,957,611
Retardant, gals (All on the Dixie N.F.)	214,626



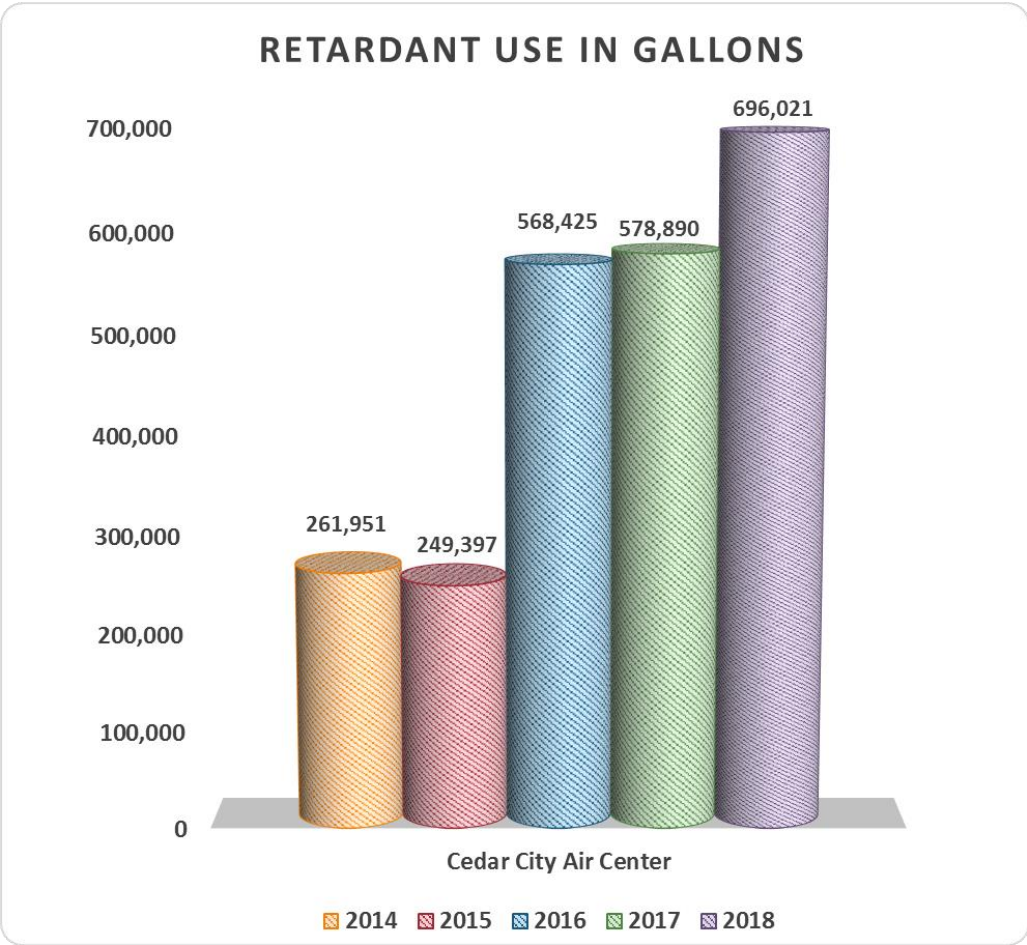
Helicopter N237BS – Arizona Strip BLM



Number of Initial Attack Fires	16
Number of Extended Attack Fires	7
Number of Days on Extended Attack Fires	89
Contract	90 Days
Contract Extension	20 Days
Total Flight Hours	258
Total PAX Transported	1243
Total Gallons	78,117
Total Cargo Pounds	65,068

Color Country Air Center

Cedar City Tanker Base loaded 696,021 gallons of retardant for \$1,939,654 in 2018. The 10-year average for retardant pumped out of Cedar City Tanker Base is 417,797 gallons.

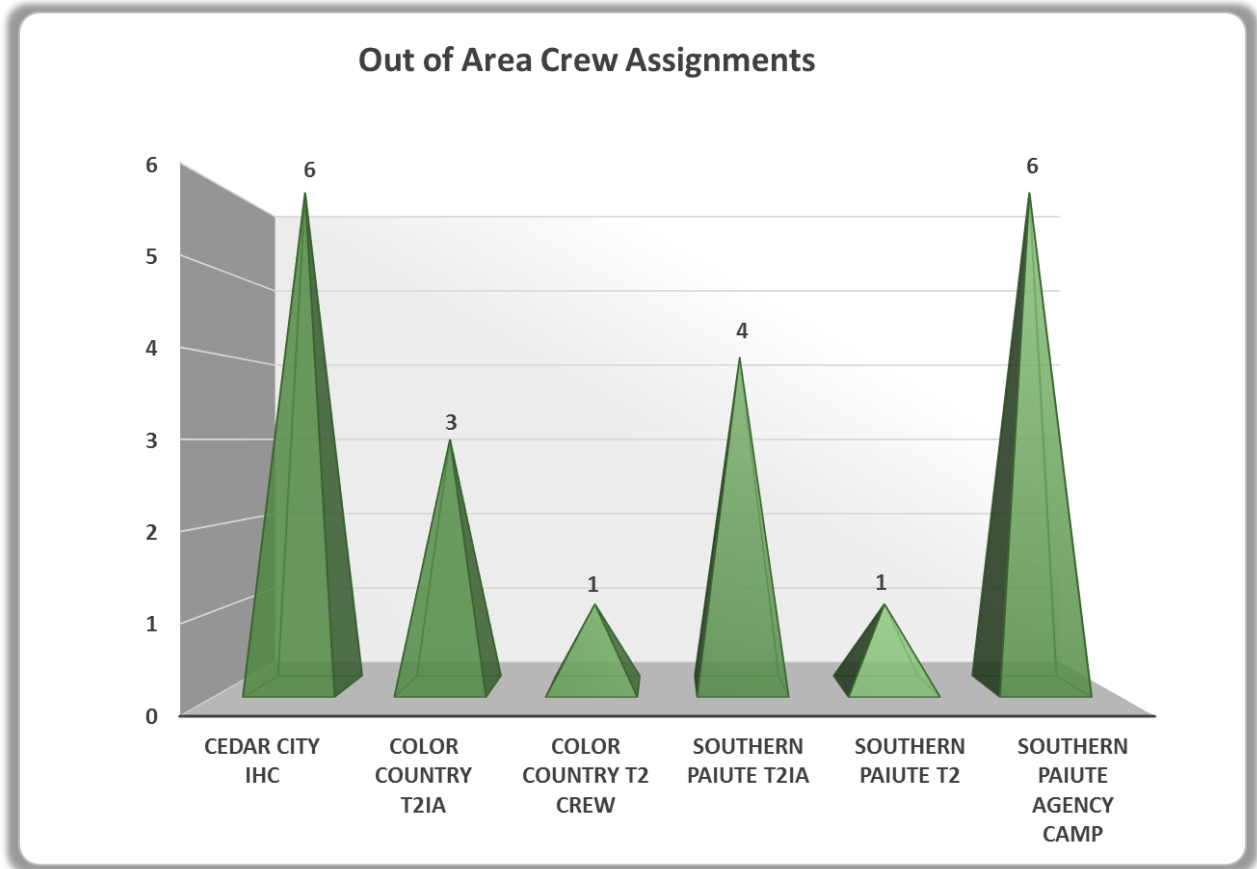


CCIFC Summary of ROSS Transactions

Requested Item	Enter	Delete	Place	Retrieve	Fill	Unfill	Reassign	Release	Cancel	Cancel UTF	UTF
Aircraft	336	1	210	23	271	2	117	168	27	40	9
Crew	66	10	44	2	67	3	37	22	7	7	5
Equipment	238	1	71	2	306	17	63	174	16	6	61
Overhead	2,102	2	270	30	2,351	35	1,136	991	64	31	140
Supply	2,544	51	1,058	64	1,359	0	1	80	117	29	1
Summary	5,286	65	1,653	121	4,354	57	1,354	1,435	231	113	216

Crews

Color Country Interagency Fire Center filled 15 fire crews and 6 camp crew orders for non-local incidents with local resources. These orders do not include local resources sent during Initial Attack, which are not captured in ROSS. The chart below does not capture reassignments.



2018 CREW ASSIGNMENT HISTORY

Southern Paiute Agency

Resource Name	Inc GACC	Inc Disp	Inc Number	Inc Name	Inc Type	Req Number	Crew Type	Mob ETD	Demob ETA	Days Assigned
CREW - CAMP - SOUTHERN PAIUTE AGENCY - SPA CAMP 1	UT-GBC	UT-CDC	UT-DIF-000265	WEST VALLEY	Fire - Wildfire	C-11	Crew, Camp	6/28/18	7/12/18	15
	UT-GBC	ID-PAC	ID-PAF-000270	MESA	Fire - Wildfire	C-15	Crew, Camp	7/30/18	8/23/18	25
CREW - CAMP - SOUTHERN PAIUTE AGENCY - SPA CAMP 2	UT-GBC	UT-CDC	UT-DIF-000265	WEST VALLEY	Fire - Wildfire	C-12	Crew, Camp	6/28/18	7/12/18	15
	OR-NWC	OR-RVC	OR-RSF-000348	NATCHEZ	Fire - Wildfire	C-87	Crew, Camp	8/8/18	8/24/18	17
	UT-GBC	UT-MFC	UT-MLF-008333	COAL HOLLOW	Fire - Wildfire	C-75	Crew, Camp	8/30/18	9/5/18	7
	UT-GBC	UT-NUC	UT-UWF-000892	BALD MOUNTAIN	Fire - Wildfire	C-2	Crew, Camp	9/15/18	9/28/18	14
	UT-GBC	NV-EIC	NV-ECFX-010400	RANGE TWO	Fire - Wildfire	C-8	Crew, Camp	10/1/18	10/6/18	6
CREW - CAMP - SOUTHERN PAIUTE AGENCY - SPA CAMP 3	UT-GBC	UT-CDC	UT-CCD-000268	BLACK MOUNTAIN	Fire - Wildfire	C-6	Crew, Camp	6/30/18	7/12/18	13
	UT-GBC	NV-EIC	NV-EKD-010229	GOOSE CREEK	Fire - Wildfire	C-20	Crew, Camp	7/31/18	8/11/18	12
CREW - T2 - SOUTHERN PAIUTE	UT-GBC	WY-TDC	WY-BTF-001825	MARTEN CREEK	Fire - Wildfire	C-4	Crew, Type 2	9/18/18	9/30/18	13
CREW - T2IA - SOUTHERN PAIUTE AGENCY - SPA 1	UT-GBC	UT-CDC	UT-DIF-000265	WEST VALLEY	Fire - Wildfire	C-17	Crew, Type 2 IA	7/4/18	7/6/18	3
	UT-GBC	NV-EIC	NV-EKD-010122	ECHO	Fire - Wildfire	C-8	Crew, Type 2 IA	7/6/18	7/15/18	10
	UT-GBC	NV-EIC	NV-EIC-100063	2018 NV-EIC GACC SUPPORT	Preparedness/Preposition	C-10	Crew, Type 2 IA	7/15/18	7/18/18	4
	UT-GBC	NV-EIC	NV-EKD-010159	STAG	Fire - Wildfire	C-1	Crew, Type 2 IA	7/16/18	7/18/18	3
	CA-OSCC	CA-OSCC	CA-OSC-000040	OSC 2018 PREPOSITION	Preparedness/Preposition	C-17	Crew, Type 2 IA	11/10/18	11/11/18	2
CA-OSCC	CA-ANCC	CA-ANF-000017	2018 ANF/SOPS SUPPORT	Preparedness/Preposition	C-2	Crew, Type 2 IA	11/11/18	11/20/18	10	
CREW - T2IA - SOUTHERN PAIUTE AGENCY - SPA 2	UT-GBC	NV-CNC	NV-BMD-020208	SUMMIT	Fire - Wildfire	C-1	Crew, Type 2 IA	7/23/18		127
	UT-GBC	NV-CNC	NV-WID-020218	SWEENEY	Fire - Wildfire	C-5	Crew, Type 2 IA	7/23/18	7/23/18	127
	UT-GBC	NV-CNC	NV-BMD-020208	SUMMIT	Fire - Wildfire	C-1	Crew, Type 2 IA	7/23/18	7/23/18	1
	UT-GBC	NV-CNC	NV-CNC-020072	2018 CNC GACC SUPPORT	Preparedness/Preposition	C-24	Crew, Type 2 IA	7/23/18	7/28/18	6
	UT-GBC	NV-CNC	NV-WID-020231	ANTELOPE	Fire - Wildfire	C-3	Crew, Type 2 IA	7/24/18	7/27/18	4
	UT-GBC	NV-SFC	NV-NWS-030447	PERRY	Fire - Wildfire	C-9	Crew, Type 2 IA	7/28/18	8/6/18	10
	UT-GBC	UT-RFC	UT-SCS-180419	HILL TOP	Fire - Wildfire	C-11	Crew, Type 2 IA	8/9/18	8/11/18	3
	UT-GBC	UT-MFC	UT-MLF-008333	COAL HOLLOW	Fire - Wildfire	C-30	Crew, Type 2 IA	8/11/18	8/24/18	14

Color Country Interagency Fire Center

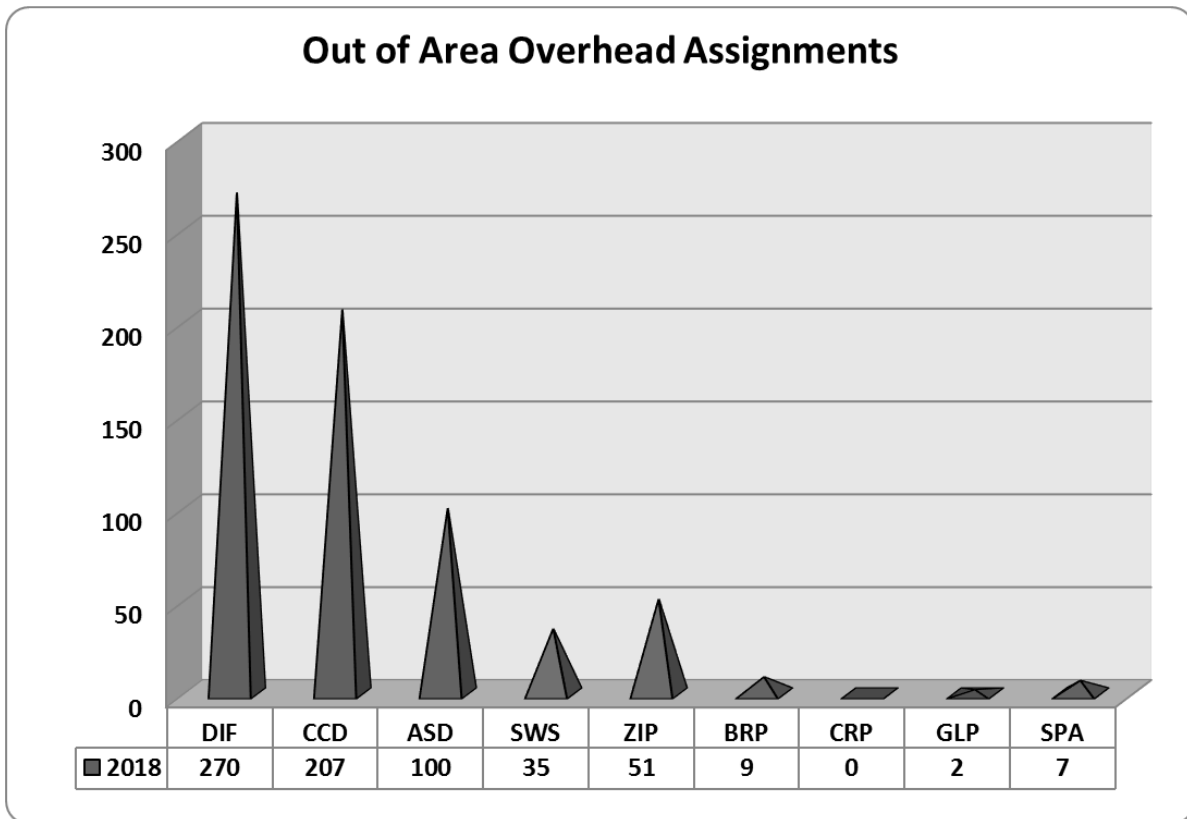
Resource Name	Inc GACC	Inc Disp	Inc Number	Inc Name	Inc Type	Req Number	Crew Type	Mob ETD	Demob ETA	Days Assigned
CREW - T2IA - COLOR COUNTRY 2	UT-GBC	UT-MFC	UT-MLF-008089	TRAIL MOUNTAIN	Fire - Wildfire	C-21	Crew, Type 2 IA	6/25/18	7/10/18	16
CREW - T2IA - COLOR COUNTRY 3	UT-GBC	ID-SCC	ID-SCC-000020	2018 SCC GACC SUPPORT	Preparedness/Preposition	C-11	Crew, Type 2 IA	7/16/18	7/22/18	7
	UT-GBC	ID-SCC	ID-TFD-000202	DOG CREEK	Fire - Wildfire	C-1	Crew, Type 2 IA	7/17/18	7/22/18	6
	UT-GBC	UT-NUC	UT-SLD-000582	CABIN GULCH	Fire - Wildfire	C-2	Crew, Type 2 IA	7/22/18	7/25/18	4
	UT-GBC	NV-EIC	NV-EKD-010204	DIXIE	Fire - Wildfire	C-2	Crew, Type 2 IA	7/25/18	7/26/18	2
	UT-GBC	ID-PAC	ID-PAF-000267	KEITHLY	Fire - Wildfire	C-5	Crew, Type 2 IA	7/26/18	8/1/18	7
CREW - T2IA - COLOR COUNTRY 4	UT-GBC	ID-SCC	ID-EIS-000247	SHARPS	Fire - Wildfire	C-33	Crew, Type 2 IA	8/5/18	8/19/18	15

Dixie National Forest

Resource Name	Inc GACC	Inc Disp	Inc Number	Inc Name	Inc Type	Req Number	Crew Type	Mob ETD	Demob ETA	Days Assigned
CREW - T1 - CEDAR CITY IHC	NM-SWC	NM-SWC	NM-R03-000001	2018 R3 REGIONAL SUPPORT	Preparedness/Preposition	C-41	Crew, Type 1	5/13/18	5/29/18	17
	NM-SWC	AZ-TDC	AZ-CNF-000329	BARREL	Fire - Wildfire	C-2	Crew, Type 1	5/16/18	5/17/18	2
	UT-GBC	UT-CDC	UT-CCD-000195	SHURTZ CANYON	Fire - Wildfire	C-1	Crew, Type 1	6/3/18	6/3/18	1
	CO-RMC	CO-DRC	CO-SJF-000416	416	Fire - Wildfire	C-19	Crew, Type 2 IA	6/4/18	6/5/18	2
	CO-RMC	CO-DRC	CO-MNX-000475	ALKALI	Fire - Wildfire	C-1	Crew, Type 2 IA	6/5/18	6/5/18	1
	CO-RMC	CO-DRC	CO-SJF-000416	416	Fire - Wildfire	C-24	Crew, Type 2 IA	6/5/18	6/18/18	14
	UT-GBC	UT-CDC	UT-DIF-000262	WILLOW	Fire - Wildfire	C-1	Crew, Type 1	6/26/18	6/27/18	2
	UT-GBC	UT-CDC	UT-SWS-000266	DRY CANYON	Fire - Wildfire	C-1	Crew, Type 1	6/27/18	6/29/18	3
	UT-GBC	UT-CDC	UT-DIF-000265	WEST VALLEY	Fire - Wildfire	C-14	Crew, Type 1	6/29/18	7/9/18	11
	UT-GBC	ID-BDC	ID-BOF-000518	LODGEPOLE	Fire - Wildfire	C-8	Crew, Type 1	7/14/18	7/15/18	2
	UT-GBC	ID-BDC	ID-SWS-000527	MM21 HWY21	Fire - Wildfire	C-3	Crew, Type 1	7/15/18	7/16/18	2
	UT-GBC	ID-BDC	ID-BOF-000518	LODGEPOLE	Fire - Wildfire	C-12	Crew, Type 1	7/16/18	7/22/18	7
	UT-GBC	NV-EIC	NV-DVT-010179	OWYHEE	Fire - Wildfire	C-11	Crew, Type 1	7/22/18	7/25/18	4
	UT-GBC	NV-EIC	NV-EIC-100063	2018 NV-EIC GACC SUPPORT	Preparedness/Preposition	C-16	Crew, Type 1	7/25/18	7/25/18	1
	UT-GBC	NV-CNC	NV-WID-020235	GREGG	Fire - Wildfire	C-1	Crew, Type 1	7/25/18	7/29/18	5
	UT-GBC	ID-SCC	ID-EIS-000247	SHARPS	Fire - Wildfire	C-12	Crew, Type 1	8/1/18	8/11/18	11
	UT-GBC	UT-NUC	UT-NES-200383	DOLLAR RIDGE	Fire - Wildfire	C-50	Crew, Type 1	8/11/18	8/16/18	6
	UT-GBC	UT-GBC	UT-GBC-000001	2018 GBCC SUPPORT	Preparedness/Preposition	C-53	Crew, Type 1	8/20/18	8/20/18	99
	UT-GBC	NV-EIC	NV-ECFX-010299	SOUTH SUGARLOAF	Fire - Wildfire	C-9	Crew, Type 1	8/20/18	8/31/18	12
	UT-GBC	NV-EIC	NV-ECFX-010340	OWL CREEK	Fire - Wildfire	C-7	Crew, Type 1	8/31/18	9/4/18	5
	UT-GBC	ID-SCC	ID-SCC-000020	2018 SCC GACC SUPPORT	Preparedness/Preposition	C-21	Crew, Type 1	9/8/18	9/9/18	2
	UT-GBC	ID-BDC	ID-BOF-001019	CASNER	Fire - Wildfire	C-6	Crew, Type 1	9/9/18	9/13/18	5
	UT-GBC	ID-PAC	ID-PAF-000020	RAPID RIVER RX	Fire - Prescribed	C-1	Crew, Type 1	9/12/18	9/12/18	76
	UT-GBC	UT-CDC	UT-DIF-000714	RIGGS	Fire - Wildfire	C-2	Crew, Type 1	9/13/18	9/17/18	5
	UT-GBC	UT-NUC	UT-UWF-000892	BALD MOUNTAIN	Fire - Wildfire	C-19	Crew, Type 1	9/17/18	9/22/18	6

Overhead

Color Country Interagency Fire Center filled 681 overhead resources on non-local incident in 2018. These orders do not include local resources sent during Initial Attack, which are not captured in ROSS.



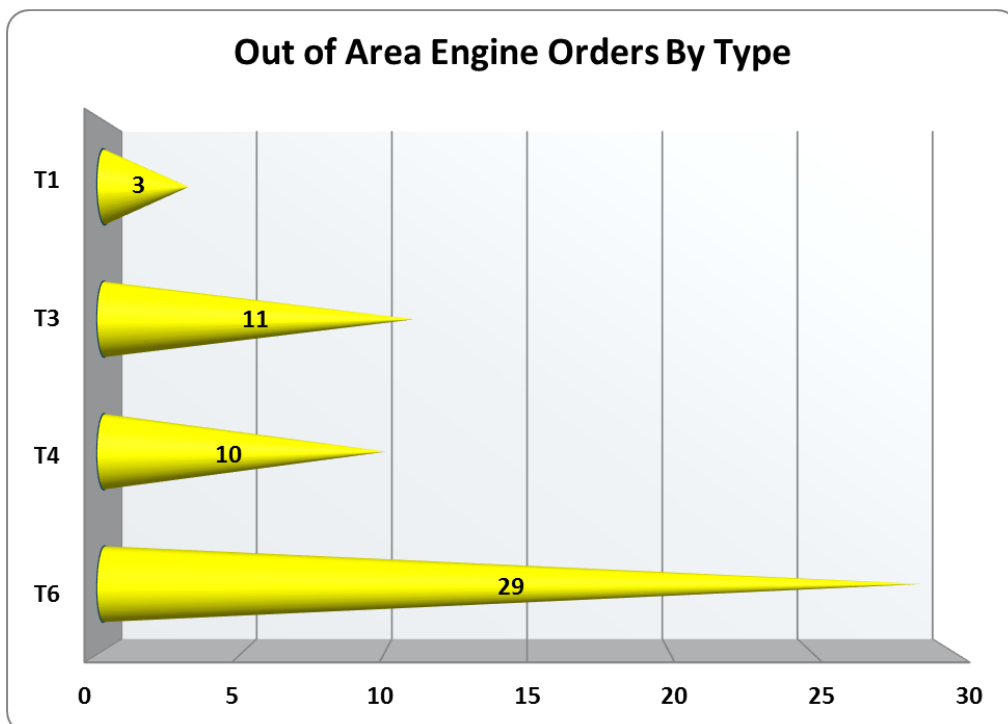
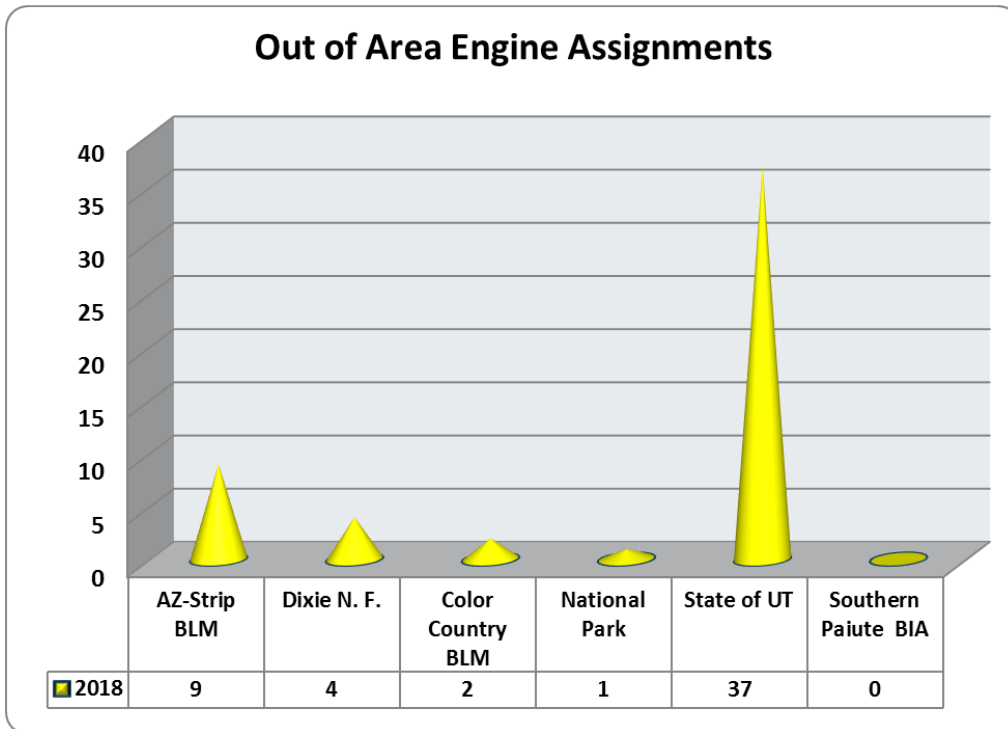
Overhead Assignment Summary

FILL	Zion National Park	Southwest State	Dixie National Forest	Arizona Strip District Office	Southern Paiute Agency	Color Country District Office	Bryce Canyon National Park	Glen Canyon National Recreation Area	Summary
AADM			1						1
ACDP				1		17			18
ACLC			1						1
AOBD			12			3			15
ASCO				5					5
ASGS			5						5
ATBM			3	2		1			6
ATGS		8	1			8			17
BAEL			1						1
BAES			4						4
BCMG			4	4		12			20
BUYL			7						7
BUYM			4						4
COMT			7						7
CORD				1		3			4
COST			8						8
CRWB			1						1
DIVS	2	2	27	1	1	8			41
DMOB	3							2	5
DRIV			1	2		5			8
DZOP						2			2
EDRC			3			2			5
EDSD			3			3			6
EDSP			5						5
EMPF		2							2
ENGB		1			1				2
EQPM			5	1		26			32
EQTR			2	4					6
FACL			13	7		12			32
FBAN							3		3
FDUL			3			7			10
FELB			3						3
FEMO			1						1
FFT2	2	6	2	3					13
FOBS			3						3
FSC3						5			5
FWPT			1			1			2
GISS	1			7					8
GSUL				5		14			19
HECM	3		5		3		1		12
HEQB		4	4			14			22
HMGB	11		5						16
HTMG			1						1
HTMM						1			1
IADP			8			9			17

Fill	Zion National Park	Southwest State	Dixie National Forest	Arizona Strip District Office	Southern Paiute Agency	Color Country District Office	Bryce Canyon National Park	Glen Canyon National Recreation Area	Summary
ICT2	10								10
ICT3	1		5	1		2			9
ICT4			1			3			4
INBA			5						5
INVF				1					1
IRIN			2						2
LOFR						1			1
LSC2			5						5
LSC3		2	3			1			6
MEDL	3			13			3		19
OPBD			1						1
ORDM			10						10
OSC2			6						6
PIO1	5								5
PIOF			1			1			2
PLDO	1		1						2
PSC2				3		1			4
PSC3			2						2
PTRC			2	3					5
RADO			3			8			11
RAMP						2			2
RCDM			2	1		8			11
READ			4	1		1			6
REAF	2		1	1					4
RESL	5		1	2					8
SCKN			2	1					3
SEC1				17		7			24
SEC2			2						2
SECG				3					3
SECM			1			1			2
SEMG				7		4			11
SOF2			3			7			10
SOFR		1	8			1			10
SPUL			2						2
TFLD	1	4	24	1	1	3			34
THSP	1	5	10	2		1			19
TIME			9			1	2		12
WHHR					1	0			1
WHLR						1			1
Summary	51	35	270	100	7	207	9	2	681

Equipment

Color Country Interagency Fire Center filled 65 Equipment orders (8 – Water Tenders, 4 – Dozer, and 43 Engines) non-local incident orders with local agency/cooperator equipment in ROSS. These orders do not include the multiple engine personnel swaps that occurred. These orders do not include local resources sent during Initial Attack.



2018 EQUIPMENT ASSIGNMENT HISTORY

Southern Paiute Agency

Resource Name	Inc GACC	Inc Disp	Inc Number	Inc Name	Inc Type	Req Number	Assignment Name	Mob ETD	Demob ETA	Days Assigned
ENGINE - T6 - UT-SPA - E6863	UT-GBC	UT-CDC	UT-ZIP-000755	ZION STEP UP 04	Preparedness/Preposition	E-1	ENGINE - T6 - UT-SPA - E6863 (CALL SOUTHERN PAIUTE DUTY OFFICER - ST. GEORGE, UT) (UT-CDC)	9/13/18	9/22/18	10

Arizona Strip District Office

Resource Name	Inc GACC	Inc Disp	Inc Number	Inc Name	Inc Type	Req Number	Assignment Name	Mob ETD	Demob ETA	Days Assigned
CHIPPER - T1 - AZ-ASD - More Bark Chipper - I423669	NM-SWC	AZ-WDC	AZ-KNF-000885	CAT	Fire - Wildfire	E-17	CHIPPER - T1 - AZ-ASD - More Bark Chipper - I423669 (CALL ARIZONA STRIP DUTY OFFICER - ST. GEORGE, UT) (UT-CDC)	8/14/18	8/23/18	10
ENGINE - T3 - AZ-ASD - E1301	NM-SWC	AZ-PDC	AZ-CRD-000553	2018 CRD SD SEVERITY	Preparedness/Preposition	E-1	ENGINE - T3 - AZ-ASD - E1301 (CALL ARIZONA STRIP DUTY OFFICER - ST. GEORGE, UT) (UT-CDC)	5/21/18	5/21/18	190
	NM-SWC	AZ-PDC	AZ-CRD-000553	2018 CRD SD SEVERITY	Preparedness/Preposition	E-1	ENGINE - T3 - AZ-ASD - E1301 (CALL ARIZONA STRIP DUTY OFFICER - ST. GEORGE, UT) (UT-CDC)	5/22/18	6/1/18	11
	NM-SWC	AZ-PDC	AZ-FYA-000537	PRISON HILL	Fire - Wildfire	E-9	ENGINE - T3 - AZ-ASD - E1301 (CALL ARIZONA STRIP DUTY OFFICER - ST. GEORGE, UT) (UT-CDC)	5/24/18	6/1/18	9
	NM-SWC	AZ-PDC	AZ-CRD-000690	2018 WAZ WEST NATIONAL SEVERITY	Preparedness/Preposition	E-1	ENGINE - T3 - AZ-ASD - E1301 (CALL ARIZONA STRIP DUTY OFFICER - ST. GEORGE, UT) (UT-CDC)	6/1/18	6/21/18	21
	UT-GBC	UT-CDC	UT-DIF-000265	WEST VALLEY	Fire - Wildfire	E-60	ENGINE - T3 - AZ-ASD - E1301 (CALL ARIZONA STRIP DUTY OFFICER - ST. GEORGE, UT) (UT-CDC)	6/27/18	7/5/18	9
	UT-GBC	UT-NUC	UT-BRS-000712	HANSEL POINT	Fire - Wildfire	E-1	ENGINE - T3 - AZ-ASD - E1301 (CALL ARIZONA STRIP DUTY OFFICER - ST. GEORGE, UT) (UT-CDC)	8/4/18	8/12/18	9
ENGINE - T4 - AZ-ASD - E1401	UT-GBC	UT-NUC	UT-NE5-200383	DOLLAR RIDGE	Fire - Wildfire	E-278	ENGINE - T3 - AZ-ASD - E1301 (CALL ARIZONA STRIP DUTY OFFICER - ST. GEORGE, UT) (UT-CDC)	8/12/18	8/19/18	8
	UT-GBC	UT-CDC	UT-DIF-000265	WEST VALLEY	Fire - Wildfire	E-61	ENGINE - T4 - AZ-ASD - E1401 (CALL ARIZONA STRIP DUTY OFFICER - ST. GEORGE, UT) (UT-CDC)	6/27/18	7/8/18	12
	UT-GBC	NV-ECC	NV-ELD-040106	PAINE	Fire - Wildfire	E-5	ENGINE - T4 - AZ-ASD - E1401 (CALL ARIZONA STRIP DUTY OFFICER - ST. GEORGE, UT) (UT-CDC)	7/18/18	7/20/18	3
ENGINE - T6 - AZ-ASD - E1601	NM-SWC	AZ-TDC	AZ-GID-000317	2018 AZ GID STATE DIRECTOR SEVERITY	Preparedness/Preposition	E-1	ENGINE - T6 - AZ-ASD - E1601 (CALL ARIZONA STRIP DUTY OFFICER - ST. GEORGE, UT) (UT-CDC)	5/13/18	5/28/18	16
	OR-NWC	OR-COC	OR-PRD-000696	PRD LONG TERM SEVERITY 2018	Preparedness/Preposition	E-5	ENGINE - T6 - AZ-ASD - E1601 (CALL ARIZONA STRIP DUTY OFFICER - ST. GEORGE, UT) (UT-CDC)	7/24/18	9/27/18	66
	OR-NWC	OR-COC	OR-SGIN-001045	SEALE 1045 RN	Fire - Wildfire	E-14	ENGINE - T6 - AZ-ASD - E1601 (CALL ARIZONA STRIP DUTY OFFICER - ST. GEORGE, UT) (UT-CDC)	8/18/18	8/25/18	8
	OR-NWC	OR-COC	OR-RFPN-001039	JENNIES PEAK 1039 RN	Fire - Wildfire	E-85	ENGINE - T6 - AZ-ASD - E1601 (CALL ARIZONA STRIP DUTY OFFICER - ST. GEORGE, UT) (UT-CDC)	9/2/18	9/27/18	26
ENGINE - T6 - AZ-ASD - E1602	OR-NWC	OR-COC	OR-PRD-000696	PRD LONG TERM SEVERITY 2018	Preparedness/Preposition	E-4	ENGINE - T6 - AZ-ASD - E1602 (CALL ARIZONA STRIP DUTY OFFICER - ST. GEORGE, UT) (UT-CDC)	7/21/18	9/18/18	60
	OR-NWC	OR-COC	OR-SGIN-001045	SEALE 1045 RN	Fire - Wildfire	E-15	ENGINE - T6 - AZ-ASD - E1602 (CALL ARIZONA STRIP DUTY OFFICER - ST. GEORGE, UT) (UT-CDC)	8/18/18	8/25/18	8
	OR-NWC	OR-COC	OR-RFPN-001039	JENNIES PEAK 1039 RN	Fire - Wildfire	E-86	ENGINE - T6 - AZ-ASD - E1602 (CALL ARIZONA STRIP DUTY OFFICER - ST. GEORGE, UT) (UT-CDC)	9/2/18	9/18/18	17
	UT-GBC	WY-TDC	WY-BTF-001823	ROOSEVELT	Fire - Wildfire	E-212	ENGINE - T6 - AZ-ASD - E1602 (CALL ARIZONA STRIP DUTY OFFICER - ST. GEORGE, UT) (UT-CDC)	9/25/18	10/8/18	14
ENGINE - T6 - AZ-ASD - E1603	NM-SWC	AZ-TDC	AZ-GID-000317	2018 AZ GID STATE DIRECTOR SEVERITY	Preparedness/Preposition	E-2	ENGINE - T6 - AZ-ASD - E1603 (CALL ARIZONA STRIP DUTY OFFICER - ST. GEORGE, UT) (UT-CDC)	5/28/18	6/12/18	16
	NM-SWC	AZ-ADC	AZ-A35-000818	JUDD	Fire - Wildfire	E-5	ENGINE - T6 - AZ-ASD - E1603 (CALL ARIZONA STRIP DUTY OFFICER - ST. GEORGE, UT) (UT-CDC)	6/7/18	6/10/18	4
	NM-SWC	AZ-TDC	AZ-A35-000857	WILDERNESS	Fire - Wildfire	E-5	ENGINE - T6 - AZ-ASD - E1603 (CALL ARIZONA STRIP DUTY OFFICER - ST. GEORGE, UT) (UT-CDC)	6/11/18	6/11/18	1
	UT-GBC	UT-CDC	UT-DIF-000265	WEST VALLEY	Fire - Wildfire	E-62	ENGINE - T6 - AZ-ASD - E1603 (CALL ARIZONA STRIP DUTY OFFICER - ST. GEORGE, UT) (UT-CDC)	6/28/18	6/30/18	3
LOWBOY - AZ-ASD I49070T	UT-GBC	UT-CDC	AZ-ASD-000330	MOKAAC	Fire - Wildfire	E-4	LOWBOY - AZ-ASD I49070T (TRUCK I427595) (UT-CDC)	7/9/18	7/16/18	8
Trailer - AZ-ASD - LIC - I55531T	UT-GBC	UT-CDC	AZ-ASD-000330	MOKAAC	Fire - Wildfire	E-7	Trailer - AZ-ASD - LIC - I55531T (Call Arizona Strip Duty officer - St George, UT) (UT-CDC)	7/9/18	7/16/18	8
UTV - AZ-ASD - GREEN RANGER	UT-GBC	UT-CDC	AZ-ASD-000330	MOKAAC	Fire - Wildfire	E-6	UTV - AZ-ASD - GREEN RANGER (CALL ARIZONA STRIP DUTY OFFICER - ST. GEORGE, UT) (UT-CDC)	7/9/18	7/16/18	8
UTV - AZ-ASD - POLARIS RAZER XP 1000 RED	UT-GBC	UT-MFC	UT-MLF-008062	TRAIL MOUNTAIN RX	Fire - Prescribed	E-7	UTV - AZ-ASD - POLARIS RAZER XP 1000 RED (CALL ARIZONA STRIP DUTY OFFICER - ST. GEORGE, UT) (UT-CDC)	6/7/18	6/7/18	1
	UT-GBC	UT-MFC	UT-MLF-008089	TRAIL MOUNTAIN	Fire - Wildfire	E-24	UTV - AZ-ASD - POLARIS RAZER XP 1000 RED (CALL ARIZONA STRIP DUTY OFFICER - ST. GEORGE, UT) (UT-CDC)	6/7/18	6/20/18	14
	UT-GBC	UT-CDC	AZ-ASD-000330	MOKAAC	Fire - Wildfire	E-5	UTV - AZ-ASD - POLARIS RAZER XP 1000 RED (CALL ARIZONA STRIP DUTY OFFICER - ST. GEORGE, UT) (UT-CDC)	7/9/18	7/16/18	8
WATER TENDER - TACTICAL - T1 - AZ-ASD - TT1901	UT-GBC	UT-NUC	UT-BRS-000712	HANSEL POINT	Fire - Wildfire	E-2	WATER TENDER - TACTICAL - T1 - AZ-ASD - TT1901 (CALL ARIZONA STRIP DUTY OFFICER - ST. GEORGE, UT AIRPORT) (UT-CDC)	8/10/18	8/12/18	3
	UT-GBC	UT-NUC	UT-NE5-200383	DOLLAR RIDGE	Fire - Wildfire	E-279	WATER TENDER - TACTICAL - T1 - AZ-ASD - TT1901 (CALL ARIZONA STRIP DUTY OFFICER - ST. GEORGE, UT AIRPORT) (UT-CDC)	8/12/18	8/19/18	8
	UT-GBC	WY-TDC	WY-BTF-001823	ROOSEVELT	Fire - Wildfire	E-237	WATER TENDER - TACTICAL - T1 - AZ-ASD - TT1901 (CALL ARIZONA STRIP DUTY OFFICER - ST. GEORGE, UT AIRPORT) (UT-CDC)	9/25/18	10/2/18	8

Color Country District Office

Resource Name	Inc GACC	Inc Disp	Inc Number	Inc Name	Inc Type	Req Number	Assignment Name	Mob ETD	Demob ETA	Days Assigned
ATV - UT-CCD - HONDA FOREMAN 4X4 LIC# M9434	UT-GBC	ID-EIC	ID-IFD-000095	2018 IFD SEVERITY	Preparedness/Preposition	E-11	ATV - UT-CCD - HONDA FOREMAN 4X4 - LIC# M9434 (CALL COLOR COUNTRY BLM DUTY OFFICER - CEDAR CITY, UT) (UT-CDC)	8/10/18	9/9/18	31
ATV - UT-CCD - HONDA FOREMAN ES - LIC# M8718	UT-GBC	NV-EIC	NV-ECFX-010299	SOUTH SUGARLOAF	Fire - Wildfire	E-181	ATV - UT-CCD - HONDA FOREMAN ES - LIC# M8718 (CALL COLOR COUNTRY BLM DUTY OFFICER - CEDAR CITY, UT) (UT-CDC)	8/25/18	9/5/18	12
DOZER - T1 - UT-CCD - D4860	UT-GBC	UT-MFC	UT-MLF-008089	TRAIL MOUNTAIN	Fire - Wildfire	E-32	DOZER - T1 - UT-CCD - D4860 (CALL COLOR COUNTRY DISTRICT DUTY OFFICER) (UT-CDC)	6/11/18	6/20/18	10
	UT-GBC	UT-CDC	UT-DIF-000265	WEST VALLEY	Fire - Wildfire	E-71	DOZER - T1 - UT-CCD - D4860 (CALL COLOR COUNTRY DISTRICT DUTY OFFICER) (UT-CDC)	6/28/18	6/28/18	1
	UT-GBC	UT-NUC	UT-SLD-000570	2018 WEST DESERT DISTRICT SEVERITY	Preparedness/Preposition	E-4	DOZER - T1 - UT-CCD - D4860 (CALL COLOR COUNTRY DISTRICT DUTY OFFICER) (UT-CDC)	7/31/18	8/14/18	15
	UT-GBC	ID-EIC	ID-IFD-000095	2018 IFD SEVERITY	Preparedness/Preposition	E-12	DOZER - T1 - UT-CCD - D4860 (CALL COLOR COUNTRY DISTRICT DUTY OFFICER) (UT-CDC)	8/17/18	9/9/18	24
	UT-GBC	ID-EIC	ID-1BN-000231	GAP	Fire - Wildfire	E-7	DOZER - T1 - UT-CCD - D4860 (CALL COLOR COUNTRY DISTRICT DUTY OFFICER) (UT-CDC)	8/26/18	8/26/18	1
	UT-GBC	ID-SCC	ID-STF-000306	STEWART CREEK	Fire - Wildfire	E-63	DOZER - T1 - UT-CCD - D4860 (CALL COLOR COUNTRY DISTRICT DUTY OFFICER) (UT-CDC)	9/2/18	9/8/18	7
	UT-GBC	UT-NUC	UT-SLD-000570	2018 WEST DESERT DISTRICT SEVERITY	Preparedness/Preposition	E-13	DOZER - T1 - UT-CCD - D4860 (CALL COLOR COUNTRY DISTRICT DUTY OFFICER) (UT-CDC)	9/15/18	9/30/18	16
	UT-GBC	UT-CDC	UT-DIF-000265	WEST VALLEY	Fire - Wildfire	E-63	DOZER - T1 - UT-CCD - D4860 (CALL COLOR COUNTRY DISTRICT DUTY OFFICER - CEDAR CITY, UT) (UT-CDC)	6/27/18	7/1/18	5
ENGINE - T4 - UT-CCD - E4406	UT-GBC	UT-CDC	UT-DIF-000265	WEST VALLEY	Fire - Wildfire	E-64	ENGINE - T4 - UT-CCD - E4406 (CALL COLOR COUNTRY BLM DUTY OFFICER - CEDAR CITY, UT) (UT-CDC)	6/27/18	7/1/18	5
ENGINE - T4 - UT-CCD - E4407	UT-GBC	UT-CDC	UT-DIF-000265	WEST VALLEY	Fire - Wildfire	E-64	ENGINE - T4 - UT-CCD - E4407 (CALL COLOR COUNTRY BLM DUTY OFFICER - CEDAR CITY, UT) (UT-CDC)	6/27/18	7/1/18	5
ENGINE - T6 - UT-CCD - E4602	NM-SWC	NM-SDC	NM-GNF-000001	2018 GILA ABCD MSC	Fire - Wildfire	E-3	ENGINE - T6 - UT-CCD - E4602 (CALL COLOR COUNTRY BLM DUTY OFFICER - CEDAR CITY, UT) (UT-CDC)	4/23/18	5/8/18	16
	UT-GBC	UT-CDC	UT-DIF-000265	WEST VALLEY	Fire - Wildfire	E-65	ENGINE - T6 - UT-CCD - E4602 (CALL COLOR COUNTRY BLM DUTY OFFICER - CEDAR CITY, UT) (UT-CDC)	6/27/18	7/7/18	11
	UT-GBC	UT-CDC	UT-DIF-000714	RIGGS	Fire - Wildfire	E-2	ENGINE - T6 - UT-CCD - E4602 (CALL COLOR COUNTRY BLM DUTY OFFICER - CEDAR CITY, UT) (UT-CDC)	9/11/18	10/7/18	27

ENGINE - T6 - UT-CCD - E4604	UT-GBC	UT-CDC	UT-DIF-000265	WEST VALLEY	Fire - Wildfire	E-66	ENGINE - T6 - UT-CCD - E4604 (CALL COLOR COUNTRY BLM DUTY OFFICER - ST. GEORGE, UT) (UT-CDC)	6/27/18	7/1/18	5
	UT-GBC	UT-CDC	UT-DIF-000714	RIGGS	Fire - Wildfire	E-9	ENGINE - T6 - UT-CCD - E4604 (CALL COLOR COUNTRY BLM DUTY OFFICER - ST. GEORGE, UT) (UT-CDC)	9/24/18	10/7/18	14
	CA-OSCC	CA-OSCC	CA-OSC-000040	OSC 2018 PREPOSITION	Preparedness/Preposition	E-256	ENGINE - T6 - UT-CCD - E4604 (CALL COLOR COUNTRY BLM DUTY OFFICER - ST. GEORGE, UT) (UT-CDC)	11/9/18	11/10/18	2
ENGINE - T6 - UT-CCD - E4605	CA-OSCC	CA-ANCC	CA-ANF-000017	2018 ANF/SOPS SUPPORT	Preparedness/Preposition	E-6	ENGINE - T6 - UT-CCD - E4604 (CALL COLOR COUNTRY BLM DUTY OFFICER - ST. GEORGE, UT) (UT-CDC)	11/10/18	11/19/18	10
	UT-GBC	UT-CDC	UT-DIF-000714	RIGGS	Fire - Wildfire	E-3	ENGINE - T6 - UT-CCD - E4605 (CALL COLOR COUNTRY BLM DUTY OFFICER - CEDAR CITY, UT) (UT-CDC)	9/11/18	10/7/18	27
PICKUP - CHASE - UT-CCD - GSENM - Lic I620619	UT-GBC	NV-EIC	NV-NNS-010324	COUNTY LINE	Fire - Wildfire	C-5.24	PICKUP - CHASE - UT-CCD - GSENM - Lic I620619 (UT-CDC)	8/26/18	8/29/18	4
TRAILER - LOGISTICS - UT-CCD - LIC# I276915	UT-GBC	UT-CDC	UT-DIF-000265	WEST VALLEY	Fire - Wildfire	E-12	TRAILER - LOGISTICS - UT-CCD - LIC# I276915 (CALL COLOR COUNTRY BLM DUTY OFFICER - CEDAR CITY, UT) (UT-CDC)	6/28/18	6/30/18	3
TRAILER - T3 COMMAND - UT-CCD - LIC #I276936	UT-GBC	UT-CDC	UT-CCD-000268	BLACK MOUNTAIN	Fire - Wildfire	E-5	TRAILER - T3 COMMAND - UT-CCD - LIC #I276936 (CALL COLOR COUNTRY BLM DUTY OFFICER - CEDAR CITY, UT) (UT-CDC)	6/28/18	7/4/18	7
UTV - UT-CCD - POLARIS RANGER XP 800	UT-GBC	UT-CDC	UT-CCD-000474	HORSE VALLEY	Fire - Wildfire	E-12	UTV - UT-CCD - POLARIS RANGER XP 800 (CALL COLOR COUNTRY BLM DUTY OFFICER - CEDAR CITY, UT) (UT-CDC)	7/21/18	8/13/18	24

Bryce Canyon National Park

Resource Name	Inc GACC	Inc Disp	Inc Number	Inc Name	Inc Type	Req Number	Assignment Name	Mob ETD	Demob ETA	Days Assigned
ENGINE - T6 - UT-BRP - E-621	UT-GBC	UT-CDC	UT-DIF-000714	RIGGS	Fire - Wildfire	E-4	ENGINE - T6 - UT-BRP - E-621 (LIC# I512473 - CALL BRYCE CANYON NP DUTY OFFICER) (UT-CDC)	9/11/18	10/14/18	34

Zion National Park

Resource Name	Inc GACC	Inc Disp	Inc Number	Inc Name	Inc Type	Req Number	Assignment Name	Mob ETD	Demob ETA	Days Assigned
ENGINE - T4 - UT-ZIP - E403	UT-GBC	UT-CDC	UT-CCD-000268	BLACK MOUNTAIN	Fire - Wildfire	E-11	ENGINE - T4 - UT-ZIP - E403 (LIC# I515000 - CALL ZION N.P. DUTY OFFICER) (UT-CDC)	6/30/18	7/3/18	4
	UT-GBC	NV-EIC	NV-ECFX-010299	SOUTH SUGARLOAF	Fire - Wildfire	E-111	ENGINE - T4 - UT-ZIP - E403 (LIC# I515000 - CALL ZION N.P. DUTY OFFICER) (UT-CDC)	8/21/18	9/6/18	17
	UT-GBC	NV-EIC	NV-EKD-010114	ELKO BLM NATIONAL SEVERITY 2018	Preparedness/Preposition	E-36	ENGINE - T4 - UT-ZIP - E403 (LIC# I515000 - CALL ZION N.P. DUTY OFFICER) (UT-CDC)	9/6/18	9/19/18	14
	UT-GBC	NV-EIC	NV-ECFX-010372	BLAZE	Fire - Wildfire	E-7	ENGINE - T4 - UT-ZIP - E403 (LIC# I515000 - CALL ZION N.P. DUTY OFFICER) (UT-CDC)	9/6/18	9/7/18	2

Dixie National Forest

Resource Name	Inc GACC	Inc Disp	Inc Number	Inc Name	Inc Type	Req Number	Assignment Name	Mob ETD	Demob ETA	Days Assigned
ENGINE - T4 - UT-DIF - E421	NM-SWC	AZ-PHC	AZ-TNF-000002	2018 TNF ABCD MISC	Fire - Wildfire	E-41	ENGINE - T4 - UT-DIF - E421 (CALL DIXIE NF CEDAR CITY DUTY OFFICER - CEDAR CITY, UT) (UT-CDC)	5/14/18	6/12/18	30
	NM-SWC	AZ-PHC	AZ-TNF-000927	2018 TNF ABCD PREPO	Preparedness/Preposition	E-8	ENGINE - T4 - UT-DIF - E421 (CALL DIXIE NF CEDAR CITY DUTY OFFICER - CEDAR CITY, UT) (UT-CDC)	6/12/18	6/28/18	17
	UT-GBC	UT-CDC	UT-CCD-000268	BLACK MOUNTAIN	Fire - Wildfire	E-7	ENGINE - T4 - UT-DIF - E421 (CALL DIXIE NF CEDAR CITY DUTY OFFICER - CEDAR CITY, UT) (UT-CDC)	6/29/18	7/1/18	3
	UT-GBC	NV-EIC	NV-EKD-010361	MINE	Fire - Wildfire	E-12	ENGINE - T4 - UT-DIF - E421 (CALL DIXIE NF CEDAR CITY DUTY OFFICER - CEDAR CITY, UT) (UT-CDC)	9/4/18	9/6/18	3
	UT-GBC	NV-EIC	NV-EIC-100063	2018 NV-EIC GACC SUPPORT	Preparedness/Preposition	E-163	ENGINE - T4 - UT-DIF - E421 (CALL DIXIE NF CEDAR CITY DUTY OFFICER - CEDAR CITY, UT) (UT-CDC)	9/6/18	9/12/18	7
ENGINE - T4 - UT-DIF - E4711	UT-GBC	UT-CDC	UT-DIF-000265	WEST VALLEY	Fire - Wildfire	E-69	ENGINE - T4 - UT-DIF - E4711 (CALL DIXIE NF PINE VALLEY DUTY OFFICER - ST. GEORGE, UT) (UT-CDC)	6/27/18	7/13/18	17
	UT-GBC	UT-MFC	UT-MLF-008333	COAL HOLLOW	Fire - Wildfire	E-208	ENGINE - T4 - UT-DIF - E4711 (CALL DIXIE NF PINE VALLEY DUTY OFFICER - ST. GEORGE, UT) (UT-CDC)	8/16/18	8/31/18	16
ENGINE - T4 - UT-DIF - E4722	UT-GBC	ID-EIC	ID-IFD-000095	2018 IFD SEVERITY	Preparedness/Preposition	E-4	ENGINE - T4 - UT-DIF - E4722 (CALL CEDAR CITY R.D. DUTY OFFICER - CEDAR CITY, UT) (UT-CDC)	7/23/18	10/2/18	72
	UT-GBC	ID-EIC	ID-1MN-000136	TWIN BUTTE	Fire - Wildfire	E-8	ENGINE - T4 - UT-DIF - E4722 (CALL CEDAR CITY R.D. DUTY OFFICER - CEDAR CITY, UT) (UT-CDC)	7/24/18	7/25/18	2
	UT-GBC	ID-EIC	ID-IFD-000138	DEVILS HOLE	Fire - Wildfire	E-9	ENGINE - T4 - UT-DIF - E4722 (CALL CEDAR CITY R.D. DUTY OFFICER - CEDAR CITY, UT) (UT-CDC)	7/25/18	7/26/18	2
	UT-GBC	ID-EIC	ID-IFD-000145	GRASSY RIDGE	Fire - Wildfire	E-7	ENGINE - T4 - UT-DIF - E4722 (CALL CEDAR CITY R.D. DUTY OFFICER - CEDAR CITY, UT) (UT-CDC)	7/26/18	8/3/18	9
	UT-GBC	ID-EIC	ID-1BN-000173	BIG HORSE	Fire - Wildfire	E-7	ENGINE - T4 - UT-DIF - E4722 (CALL CEDAR CITY R.D. DUTY OFFICER - CEDAR CITY, UT) (UT-CDC)	8/5/18	8/7/18	3
	UT-GBC	ID-EIC	ID-IFD-000183	DEAD MAN FLAT	Fire - Wildfire	E-5	ENGINE - T4 - UT-DIF - E4722 (CALL CEDAR CITY R.D. DUTY OFFICER - CEDAR CITY, UT) (UT-CDC)	8/9/18	8/10/18	2
	UT-GBC	ID-SCC	ID-STF-000286	HOUTZ CANYON	Fire - Wildfire	E-4	ENGINE - T4 - UT-DIF - E4722 (CALL CEDAR CITY R.D. DUTY OFFICER - CEDAR CITY, UT) (UT-CDC)	8/13/18	8/14/18	2
	UT-GBC	ID-EIC	ID-FHA-000202	ROSS FORK	Fire - Wildfire	E-4	ENGINE - T4 - UT-DIF - E4722 (CALL CEDAR CITY R.D. DUTY OFFICER - CEDAR CITY, UT) (UT-CDC)	8/16/18	8/18/18	3
	UT-GBC	ID-EIC	ID-IFD-000230	SIDEHILL	Fire - Wildfire	E-5	ENGINE - T4 - UT-DIF - E4722 (CALL CEDAR CITY R.D. DUTY OFFICER - CEDAR CITY, UT) (UT-CDC)	8/26/18	8/26/18	1
	UT-GBC	ID-EIC	ID-4BN-000259	MORGANS PASTURE	Fire - Wildfire	E-2	ENGINE - T4 - UT-DIF - E4722 (CALL CEDAR CITY R.D. DUTY OFFICER - CEDAR CITY, UT) (UT-CDC)	9/8/18	9/9/18	2
	UT-GBC	ID-EIC	ID-5CN-000269	INDIAN BUTTE	Fire - Wildfire	E-4	ENGINE - T4 - UT-DIF - E4722 (CALL CEDAR CITY R.D. DUTY OFFICER - CEDAR CITY, UT) (UT-CDC)	9/12/18	9/18/18	7
	UT-GBC	ID-EIC	ID-IFD-000281	CINDER	Fire - Wildfire	E-1	ENGINE - T4 - UT-DIF - E4722 (CALL CEDAR CITY R.D. DUTY OFFICER - CEDAR CITY, UT) (UT-CDC)	9/18/18	9/18/18	1
	UT-GBC	ID-EIC	ID-CTF-000283	LYLE SPRINGS	Fire - Wildfire	E-2	ENGINE - T4 - UT-DIF - E4722 (CALL CEDAR CITY R.D. DUTY OFFICER - CEDAR CITY, UT) (UT-CDC)	9/18/18	9/21/18	4
	UT-GBC	ID-EIC	ID-IFD-000308	HEISE	Fire - Wildfire	E-1	ENGINE - T4 - UT-DIF - E4722 (CALL CEDAR CITY R.D. DUTY OFFICER - CEDAR CITY, UT) (UT-CDC)	9/30/18	9/30/18	1
	EXCAVATOR - T4 - MINI - DIF - EN 1719	UT-GBC	UT-CDC	UT-DIF-000265	WEST VALLEY	Fire - Wildfire	E-95	EXCAVATOR - T4 - MINI - DIF - EN 1719 (CALL DIXIE NATIONAL FOREST FMO) (UT-CDC)	7/1/18	7/6/18
MASTICATOR - BOBCAT / T350 - UT-DIF - Powell R.D.	UT-GBC	UT-CDC	UT-DIF-000714	RIGGS	Fire - Wildfire	E-8	MASTICATOR - BOBCAT / T350 - UT-DIF - Powell R.D. (CALL DIXIE NATIONAL FOREST DUTY OFFICER) (UT-CDC)	9/23/18	10/1/18	9
PICKUP - CHASE - UT-DIF - D2 FUELS - Lic A381629	UT-GBC	NV-EIC	NV-NNS-010324	COUNTY LINE	Fire - Wildfire	C-5.22	PICKUP - CHASE - UT-DIF - D2 FUELS - Lic A381629 (UT-CDC)	8/26/18	8/29/18	4

PICKUP - CHASE - UT-DIF - D3 - Lic A367118	UT-GBC	NV-EIC	NV-NNS-010324	COUNTY LINE	Fire - Wildfire	C-5.21	PICKUP - CHASE - UT-DIF - D3 - Lic A367118 (UT-CDC)	8/26/18	8/29/18	4
PICKUP - CHASE - UT-DIF - SQ3-2 - Lic A369854	UT-GBC	NV-EIC	NV-NNS-010324	COUNTY LINE	Fire - Wildfire	C-5.20	PICKUP - CHASE - UT-DIF - SQ3-2 - Lic A369854 (UT-CDC)	8/26/18	8/29/18	4
PICKUP - CHASE - UT-DIF - SQ4-2 - Lic A367120	UT-GBC	NV-EIC	NV-NNS-010324	COUNTY LINE	Fire - Wildfire	C-5.23	PICKUP - CHASE - UT-DIF - SQ4-2 - Lic A367120 (UT-CDC)	8/26/18	8/29/18	4
TRAILER - ATV-UTV - UT-DIF - LIC# A364534	UT-GBC	NV-EIC	NV-ECFX-010299	SOUTH SUGARLOAF	Fire - Wildfire	C-9.21	TRAILER - ATV-UTV - UT-DIF - LIC# A364534 (CALL CEDAR CITY R.D. DUTY OFFICER - CEDAR CITY, UT) (UT-CDC)	8/20/18	8/31/18	12
	UT-GBC	NV-EIC	NV-ECFX-010340	OWL CREEK	Fire - Wildfire	C-7.21	TRAILER - ATV-UTV - UT-DIF - LIC# A364534 (CALL CEDAR CITY R.D. DUTY OFFICER - CEDAR CITY, UT) (UT-CDC)	8/31/18	9/4/18	5
	UT-GBC	ID-SCC	ID-SCC-000020	2018 SCC GACC SUPPORT	Preparedness/Preposition	C-21.23	TRAILER - ATV-UTV - UT-DIF - LIC# A364534 (CALL CEDAR CITY R.D. DUTY OFFICER - CEDAR CITY, UT) (UT-CDC)	9/8/18	9/9/18	2
	UT-GBC	ID-BDC	ID-BOF-001019	CASNER	Fire - Wildfire	C-6.23	TRAILER - ATV-UTV - UT-DIF - LIC# A364534 (CALL CEDAR CITY R.D. DUTY OFFICER - CEDAR CITY, UT) (UT-CDC)	9/9/18	9/13/18	5
	UT-GBC	UT-CDC	UT-DIF-000714	RIGGS	Fire - Wildfire	C-2.23	TRAILER - ATV-UTV - UT-DIF - LIC# A364534 (CALL CEDAR CITY R.D. DUTY OFFICER - CEDAR CITY, UT) (UT-CDC)	9/13/18	9/17/18	5
	UT-GBC	UT-NUC	UT-UWF-000892	BALD MOUNTAIN	Fire - Wildfire	C-19.23	TRAILER - ATV-UTV - UT-DIF - LIC# A364534 (CALL CEDAR CITY R.D. DUTY OFFICER - CEDAR CITY, UT) (UT-CDC)	9/17/18	9/22/18	6
UTV - UT-DIF - Cedar City IHC - Honda Pioneer 1000 - EN 3935	UT-GBC	NV-EIC	NV-ECFX-010299	SOUTH SUGARLOAF	Fire - Wildfire	C-9.20	UTV - UT-DIF - Cedar City IHC - Honda Pioneer 1000 - EN 3935 (CALL CEDAR CITY R.D. DUTY OFFICER - CEDAR CITY, UT) (UT-CDC)	8/20/18	8/31/18	12
	UT-GBC	NV-EIC	NV-ECFX-010340	OWL CREEK	Fire - Wildfire	C-7.20	UTV - UT-DIF - Cedar City IHC - Honda Pioneer 1000 - EN 3935 (CALL CEDAR CITY R.D. DUTY OFFICER - CEDAR CITY, UT) (UT-CDC)	8/31/18	9/4/18	5
	UT-GBC	ID-SCC	ID-SCC-000020	2018 SCC GACC SUPPORT	Preparedness/Preposition	C-21.24	UTV - UT-DIF - Cedar City IHC - Honda Pioneer 1000 - EN 3935 (CALL CEDAR CITY R.D. DUTY OFFICER - CEDAR CITY, UT) (UT-CDC)	9/8/18	9/9/18	2
	UT-GBC	ID-BDC	ID-BOF-001019	CASNER	Fire - Wildfire	C-6.24	UTV - UT-DIF - Cedar City IHC - Honda Pioneer 1000 - EN 3935 (CALL CEDAR CITY R.D. DUTY OFFICER - CEDAR CITY, UT) (UT-CDC)	9/9/18	9/13/18	5
	UT-GBC	UT-CDC	UT-DIF-000714	RIGGS	Fire - Wildfire	C-2.24	UTV - UT-DIF - Cedar City IHC - Honda Pioneer 1000 - EN 3935 (CALL CEDAR CITY R.D. DUTY OFFICER - CEDAR CITY, UT) (UT-CDC)	9/13/18	9/17/18	5
	UT-GBC	UT-NUC	UT-UWF-000892	BALD MOUNTAIN	Fire - Wildfire	C-19.24	UTV - UT-DIF - Cedar City IHC - Honda Pioneer 1000 - EN 3935 (CALL CEDAR CITY R.D. DUTY OFFICER - CEDAR CITY, UT) (UT-CDC)	9/17/18	9/22/18	6

Brian Head Fire Department

Resource Name	Inc GACC	Inc Disp	Inc Number	Inc Name	Inc Type	Req Number	Assignment Name	Mob ETD	Demob ETA	Days Assigned
ENGINE - T4 - BRIAN HEAD FD - E-741	UT-GBC	UT-CDC	UT-SWS-000266	DRY CANYON	Fire - Wildfire	E-3	ENGINE - T4 - BRIAN HEAD FD - E-741 (LIC# 206052EX CALL SOUTHWEST STATE FMO) (UT-CDC)	6/29/18	6/29/18	1
ENGINE - T4 - BRIAN HEAD FD - E-742	UT-GBC	UT-NUC	UT-NUC-000003	2018 NUC GACC SUPPORT	Preparedness/Preposition	E-23	ENGINE - T4 - BRIAN HEAD FD - E-742 (LIC# 208537EX CALL SOUTHWEST STATE FMO) (UT-CDC)	7/20/18	8/6/18	18
	UT-GBC	UT-NUC	UT-SLD-000582	CABIN GULCH	Fire - Wildfire	E-6	ENGINE - T4 - BRIAN HEAD FD - E-742 (LIC# 208537EX CALL SOUTHWEST STATE FMO) (UT-CDC)	7/21/18	7/23/18	3
	UT-GBC	UT-NUC	UT-SLD-000636	RAFT RIVER	Fire - Wildfire	E-1	ENGINE - T4 - BRIAN HEAD FD - E-742 (LIC# 208537EX CALL SOUTHWEST STATE FMO) (UT-CDC)	7/26/18	7/31/18	6
	UT-GBC	UT-NUC	UT-SLD-000649	CEDAR MOUNTAIN ONE	Fire - Wildfire	E-23	ENGINE - T4 - BRIAN HEAD FD - E-742 (LIC# 208537EX CALL SOUTHWEST STATE FMO) (UT-CDC)	7/31/18	8/6/18	7
ENGINE - T6 - BRIAN HEAD FD - E-761	UT-GBC	UT-MFC	UT-MLF-008089	TRAIL MOUNTAIN	Fire - Wildfire	E-149	ENGINE - T6 - BRIAN HEAD FD - E-761 (LIC# 26754EX CALL SOUTHWEST STATE FMO) (UT-CDC)	6/26/18	7/3/18	8
	UT-GBC	NV-CNC	NV-BMD-020073	2018 BMD SUPPORT	Preparedness/Preposition	E-24	ENGINE - T6 - BRIAN HEAD FD - E-761 (LIC# 26754EX CALL SOUTHWEST STATE FMO) (UT-CDC)	8/17/18	9/1/18	16
	UT-GBC	NV-EIC	NV-LANX-010307	SHEEP CREEK	Fire - Wildfire	E-8	ENGINE - T6 - BRIAN HEAD FD - E-761 (LIC# 26754EX CALL SOUTHWEST STATE FMO) (UT-CDC)	8/18/18	8/24/18	7
	UT-GBC	NV-EIC	NV-NNS-010324	COUNTY LINE	Fire - Wildfire	E-21	ENGINE - T6 - BRIAN HEAD FD - E-761 (LIC# 26754EX CALL SOUTHWEST STATE FMO) (UT-CDC)	8/24/18	8/30/18	7
WATER TENDER - SUPPORT - T3 - BRIAN HEAD FD - WT-73	UT-GBC	UT-CDC	UT-SWS-000266	DRY CANYON	Fire - Wildfire	E-4	WATER TENDER - SUPPORT - T3 - BRIAN HEAD FD - WT-73 (LIC# 20851EX CALL SOUTHWEST STATE FMO) (UT-CDC)	6/29/18	7/5/18	7

Cedar City Fire Department

Resource Name	Inc GACC	Inc Disp	Inc Number	Inc Name	Inc Type	Req Number	Assignment Name	Mob ETD	Demob ETA	Days Assigned	
ENGINE - T1 - CEDAR CITY FD - E-31	UT-GBC	UT-RFC	UT-FIF-180318	COVE CREEK	Fire - Wildfire	E-58	ENGINE - T1 - CEDAR CITY FD - E-31 (LIC# 87638EX CALL SOUTHWEST STATE FMO) (UT-CDC)	7/28/18	7/28/18	1	
	UT-GBC	UT-NUC	UT-UWF-000892	BALD MOUNTAIN	Fire - Wildfire	E-11	ENGINE - T1 - CEDAR CITY FD - E-31 (LIC# 87638EX CALL SOUTHWEST STATE FMO) (UT-CDC)	9/14/18	9/18/18	5	
	UT-GBC	UT-NUC	UT-UWF-000971	POLE CREEK	Fire - Wildfire	E-281	ENGINE - T1 - CEDAR CITY FD - E-31 (LIC# 87638EX CALL SOUTHWEST STATE FMO) (UT-CDC)	9/18/18	9/28/18	11	
ENGINE - T6 - CEDAR CITY FD - B-11	UT-GBC	UT-UBC	UT-NE5-100125	STRAWBERRY RIVER	Fire - Wildfire	E-4	ENGINE - T6 - CEDAR CITY FD - B-11 (LIC# 208937EX CALL SOUTHWEST STATE FMO) (UT-CDC)	6/10/18	6/15/18	6	
	UT-GBC	UT-MFC	UT-MLF-008089	TRAIL MOUNTAIN	Fire - Wildfire	E-147	ENGINE - T6 - CEDAR CITY FD - B-11 (LIC# 208937EX CALL SOUTHWEST STATE FMO) (UT-CDC)	6/25/18	7/10/18	16	
	UT-GBC	ID-BDC	ID-BOD-000536	GARAT	Fire - Wildfire	E-7	ENGINE - T6 - CEDAR CITY FD - B-11 (LIC# 208937EX CALL SOUTHWEST STATE FMO) (UT-CDC)	7/17/18	7/17/18	1	
	UT-GBC	ID-BDC	ID-BOD-000543	OTTER	Fire - Wildfire	E-9	ENGINE - T6 - CEDAR CITY FD - B-11 (LIC# 208937EX CALL SOUTHWEST STATE FMO) (UT-CDC)	7/17/18	7/20/18	4	
	UT-GBC	UT-RFC	UT-RFC-180071	2018 RFC GACC SUPPORT	Preparedness/Preposition	E-17	ENGINE - T6 - CEDAR CITY FD - B-11 (LIC# 208937EX CALL SOUTHWEST STATE FMO) (UT-CDC)	7/20/18	8/28/18	40	
	UT-GBC	UT-RFC	UT-FIF-180334	FLAT TOP	Fire - Wildfire	E-1	ENGINE - T6 - CEDAR CITY FD - B-11 (LIC# 208937EX CALL SOUTHWEST STATE FMO) (UT-CDC)	7/22/18	7/23/18	2	
	UT-GBC	UT-RFC	UT-FIF-180349	TIMBER KNOLL	Fire - Wildfire	E-1	ENGINE - T6 - CEDAR CITY FD - B-11 (LIC# 208937EX CALL SOUTHWEST STATE FMO) (UT-CDC)	7/24/18	7/25/18	2	
	UT-GBC	UT-RFC	UT-FIF-180366	POLE CANYON	Fire - Wildfire	E-1	ENGINE - T6 - CEDAR CITY FD - B-11 (LIC# 208937EX CALL SOUTHWEST STATE FMO) (UT-CDC)	7/27/18	8/28/18	33	
	UT-GBC	NV-EIC	NV-EKD-010361	MINE	Fire - Wildfire	E-11	ENGINE - T6 - CEDAR CITY FD - B-11 (LIC# 208937EX CALL SOUTHWEST STATE FMO) (UT-CDC)	9/5/18	9/6/18	2	
	UT-GBC	NV-SFC	NV-HTF-030600	BOOT	Fire - Wildfire	E-75	ENGINE - T6 - CEDAR CITY FD - B-11 (LIC# 208937EX CALL SOUTHWEST STATE FMO) (UT-CDC)	9/6/18	9/15/18	10	
ENGINE - T6 - CEDAR CITY FD - B-21	UT-GBC	WY-TDC	WY-BTF-001823	ROOSEVELT	Fire - Wildfire	E-211	ENGINE - T6 - CEDAR CITY FD - B-11 (LIC# 208937EX CALL SOUTHWEST STATE FMO) (UT-CDC)	9/25/18	10/2/18	8	
	CA-ONCC	CA-BTCC	CA-BTU-016737	CAMP	Fire - Wildfire	E-496	ENGINE - T6 - CEDAR CITY FD - B-11 (LIC# 208937EX CALL SOUTHWEST STATE FMO) (UT-CDC)	11/9/18	11/19/18	11	
	UT-GBC	UT-CDC	UT-SWS-000266	DRY CANYON	Fire - Wildfire	E-2	ENGINE - T6 - CEDAR CITY FD - B-21 (LIC# 501472EX CALL SOUTHWEST STATE FMO) (UT-CDC)	6/27/18	6/28/18	2	
	UT-GBC	UT-CDC	UT-CCD-000268	BLACK MOUNTAIN	Fire - Wildfire	E-6	ENGINE - T6 - CEDAR CITY FD - B-21 (LIC# 501472EX CALL SOUTHWEST STATE FMO) (UT-CDC)	6/28/18	7/1/18	4	
	WATER TENDER - TACTICAL - T1 - CEDAR CITY FD - T-11	UT-GBC	UT-CDC	UT-DIF-000265	WEST VALLEY	Fire - Wildfire	E-81	WATER TENDER - TACTICAL - T1 - CEDAR CITY FD - T-11 (LIC# 87652EX CALL SOUTHWEST STATE FMO) (UT-CDC)	6/30/18	7/10/18	11
		UT-GBC	NV-EIC	NV-EKD-010108	HOGAN	Fire - Wildfire	E-50	WATER TENDER - TACTICAL - T1 - CEDAR CITY FD - T-11 (LIC# 87652EX CALL SOUTHWEST STATE FMO) (UT-CDC)	7/12/18	7/20/18	9
		UT-GBC	NV-ECC	NV-ECC-040039	2018 ECC GACC SUPPORT	Preparedness/Preposition	E-21	WATER TENDER - TACTICAL - T1 - CEDAR CITY FD - T-11 (LIC# 87652EX CALL SOUTHWEST STATE FMO) (UT-CDC)	7/19/18	7/20/18	2
		UT-GBC	NV-EIC	NV-EIC-100063	2018 NV-EIC GACC SUPPORT	Preparedness/Preposition	E-72	WATER TENDER - TACTICAL - T1 - CEDAR CITY FD - T-11 (LIC# 87652EX CALL SOUTHWEST STATE FMO) (UT-CDC)	7/20/18	8/17/18	29
		UT-GBC	NV-EIC	NV-DVT-010179	OWYHEE	Fire - Wildfire	E-79	WATER TENDER - TACTICAL - T1 - CEDAR CITY FD - T-11 (LIC# 87652EX CALL SOUTHWEST STATE FMO) (UT-CDC)	7/21/18	7/25/18	5
		UT-GBC	NV-EIC	NV-EKD-010224	GLASER	Fire - Wildfire	E-9	WATER TENDER - TACTICAL - T1 - CEDAR CITY FD - T-11 (LIC# 87652EX CALL SOUTHWEST STATE FMO) (UT-CDC)	7/26/18	7/27/18	2
		UT-GBC	NV-EIC	NV-EKD-010229	GOOSE CREEK	Fire - Wildfire	E-3	WATER TENDER - TACTICAL - T1 - CEDAR CITY FD - T-11 (LIC# 87652EX CALL SOUTHWEST STATE FMO) (UT-CDC)	7/26/18	8/7/18	13
UT-GBC		UT-NUC	UT-SLD-000570	2018 WEST DESERT DISTRICT SEVERITY	Preparedness/Preposition	E-9	WATER TENDER - TACTICAL - T1 - CEDAR CITY FD - T-11 (LIC# 87652EX CALL SOUTHWEST STATE FMO) (UT-CDC)	8/25/18	9/11/18	18	
UT-GBC		UT-NUC	UT-SLD-000905	TIMPIE SPRINGS	Fire - Wildfire	E-7	WATER TENDER - TACTICAL - T1 - CEDAR CITY FD - T-11 (LIC# 87652EX CALL SOUTHWEST STATE FMO) (UT-CDC)	8/26/18	9/11/18	17	
UT-GBC	UT-CDC	UT-DIF-000714	RIGGS	Fire - Wildfire	E-5	WATER TENDER - TACTICAL - T1 - CEDAR CITY FD - T-11 (LIC# 87652EX CALL SOUTHWEST STATE FMO) (UT-CDC)	9/11/18	9/18/18	8		

Cedar Mountain Fire Protection District

Resource Name	Inc GACC	Inc Disp	Inc Number	Inc Name	Inc Type	Req Number	Assignment Name	Mob ETD	Demob ETA	Days Assigned
ENGINE - T4 - CEDAR MTN. - E-74	UT-GBC	UT-CDC	UT-DIF-000748	HARRIS RIM	Fire - Wildfire	E-2	ENGINE - T4 - CEDAR MTN. - E-74 (LIC#501007EX CALL SOUTHWEST STATE FMO) (UT-CDC)	9/7/18	9/8/18	2
WATER TENDER - SUPPORT - T3 - CEDAR MTN. T-72	UT-GBC	UT-CDC	UT-SWS-000550	BIRCH	Fire - Wildfire	E-2	WATER TENDER - SUPPORT - T3 - CEDAR MTN. T-72 (LIC#502420 CALL SOUTHWEST STATE FMO) (UT-CDC)	7/28/18	7/29/18	2
	UT-GBC	UT-CDC	UT-CCD-000619	BUSH CREEK	Fire - Wildfire	E-1	WATER TENDER - SUPPORT - T3 - CEDAR MTN. T-72 (LIC#502420 CALL SOUTHWEST STATE FMO) (UT-CDC)	8/7/18	9/7/18	32
	UT-GBC	UT-CDC	UT-DIF-000748	HARRIS RIM	Fire - Wildfire	E-1	WATER TENDER - SUPPORT - T3 - CEDAR MTN. T-72 (LIC#502420 CALL SOUTHWEST STATE FMO) (UT-CDC)	9/7/18	9/8/18	2
WATER TENDER - SUPPORT - T3 - CEDAR MTN. T-71	UT-GBC	UT-CDC	UT-SWS-000550	BIRCH	Fire - Wildfire	E-1	WATER TENDER - SUPPORT - T3 - CEDAR MTN. T-71 (LIC#208614EX CALL SOUTHWEST STATE FMO) (UT-CDC)	7/28/18	7/28/18	1

Hurricane City Fire Department

Resource Name	Inc GACC	Inc Disp	Inc Number	Inc Name	Inc Type	Req Number	Assignment Name	Mob ETD	Demob ETA	Days Assigned
ENGINE - T6 - HURRICANE FD - BRUSH 41	UT-GBC	NV-ECC	NV-ELD-040203	GOSHUTE CAVE	Fire - Wildfire	E-11	ENGINE - T6 - HURRICANE FD - BRUSH 41 (CALL WASHINGTON COUNTY FIRE WARDEN - HURRICANE, UT) (UT-CDC)	8/22/18	9/5/18	15
AMBULANCE - ALS - HURRICANE VALLEY FD - UNIT #40702	UT-GBC	UT-MFC	UT-MLF-008089	TRAIL MOUNTAIN	Fire - Wildfire	E-28	AMBULANCE - ALS - HURRICANE VALLEY FD - UNIT #40702 (LIC# 206075 - CALL SOUTHWEST STATE FMO) (UT-CDC)	6/10/18	7/2/18	23
ENGINE - T3 - HURRICANE FD - ENGINE 43	CA-OSCC	CA-OSCC	CA-OSC-000040	OSC 2018 PREPOSITION	Preparedness/Preposition	E-257	ENGINE - T3 - HURRICANE FD - ENGINE 43 (CALL WASHINGTON COUNTY FIRE WARDEN - HURRICANE, UT) (UT-CDC)	11/9/18	11/10/18	2
	CA-OSCC	CA-LPCC	CA-LPF-000007	CY18 LOS PADRES NF-OSC SUPPORT	Preparedness/Preposition	E-16	ENGINE - T3 - HURRICANE FD - ENGINE 43 (CALL WASHINGTON COUNTY FIRE WARDEN - HURRICANE, UT) (UT-CDC)	11/10/18	11/19/18	10
ENGINE - T4 - HURRICANE FD - UNIT # 39801 - BRUSH 45	UT-GBC	UT-CDC	UT-SWS-000009	DEEP CREEK	Fire - Wildfire	E-5	ENGINE - T4 - HURRICANE FD - UNIT # 39801 - BRUSH 45 (CALL SOUTHWEST STATE FMO) (UT-CDC)	1/2/18	1/4/18	3
	UT-GBC	UT-CDC	UT-DIF-000265	WEST VALLEY	Fire - Wildfire	E-15	ENGINE - T4 - HURRICANE FD - UNIT # 39801 - BRUSH 45 (CALL SOUTHWEST STATE FMO) (UT-CDC)	6/28/18	7/8/18	11
	UT-GBC	UT-RFC	UT-RFC-180071	2018 RFC GACC SUPPORT	Preparedness/Preposition	E-15	ENGINE - T4 - HURRICANE FD - UNIT # 39801 - BRUSH 45 (CALL SOUTHWEST STATE FMO) (UT-CDC)	7/8/18	7/13/18	6
	UT-GBC	NV-EIC	NV-EKD-010235	CHINA JIM	Fire - Wildfire	E-20	ENGINE - T4 - HURRICANE FD - UNIT # 39801 - BRUSH 45 (CALL SOUTHWEST STATE FMO) (UT-CDC)	7/29/18	7/30/18	121
	UT-GBC	NV-EIC	NV-EKD-010229	GOOSE CREEK	Fire - Wildfire	E-70	ENGINE - T4 - HURRICANE FD - UNIT # 39801 - BRUSH 45 (CALL SOUTHWEST STATE FMO) (UT-CDC)	7/30/18	8/1/18	13
	UT-GBC	UT-NUC	UT-UWF-000971	POLE CREEK	Fire - Wildfire	E-40	ENGINE - T4 - HURRICANE FD - UNIT # 39801 - BRUSH 45 (CALL SOUTHWEST STATE FMO) (UT-CDC)	9/15/18	9/30/18	16
ENGINE - T6 - HURRICANE FD - BRUSH 47	UT-GBC	UT-CDC	UT-SWS-000009	DEEP CREEK	Fire - Wildfire	E-2	ENGINE - T6 - HURRICANE FD - BRUSH 47 (CALL WASHINGTON COUNTY FIRE WARDEN) (UT-CDC)	1/2/18	1/4/18	3
	UT-GBC	UT-UBC	UT-NES-100125	STRAWBERRY RIVER	Fire - Wildfire	E-5	ENGINE - T6 - HURRICANE FD - BRUSH 47 (CALL WASHINGTON COUNTY FIRE WARDEN) (UT-CDC)	6/10/18	6/15/18	6
	UT-GBC	UT-MFC	UT-MLF-008089	TRAIL MOUNTAIN	Fire - Wildfire	E-146	ENGINE - T6 - HURRICANE FD - BRUSH 47 (CALL WASHINGTON COUNTY FIRE WARDEN) (UT-CDC)	6/25/18	7/1/18	7
	UT-GBC	UT-RFC	UT-RID-180184	WILLOW PATCH	Fire - Wildfire	E-21	ENGINE - T6 - HURRICANE FD - BRUSH 47 (CALL WASHINGTON COUNTY FIRE WARDEN) (UT-CDC)	7/1/18	7/12/18	12
	UT-GBC	ID-BDC	ID-BOD-000536	GARAT	Fire - Wildfire	E-6	ENGINE - T6 - HURRICANE FD - BRUSH 47 (CALL WASHINGTON COUNTY FIRE WARDEN) (UT-CDC)	7/17/18	7/18/18	2
	UT-GBC	ID-BDC	ID-BOD-000543	OTTER	Fire - Wildfire	E-11	ENGINE - T6 - HURRICANE FD - BRUSH 47 (CALL WASHINGTON COUNTY FIRE WARDEN) (UT-CDC)	7/18/18	7/20/18	3
	UT-GBC	UT-RFC	UT-RFC-180071	2018 RFC GACC SUPPORT	Preparedness/Preposition	E-18	ENGINE - T6 - HURRICANE FD - BRUSH 47 (CALL WASHINGTON COUNTY FIRE WARDEN) (UT-CDC)	7/20/18	8/1/18	13
	UT-GBC	UT-RFC	UT-RID-180336	TWIN PEAKS	Fire - Wildfire	E-1	ENGINE - T6 - HURRICANE FD - BRUSH 47 (CALL WASHINGTON COUNTY FIRE WARDEN) (UT-CDC)	7/22/18	7/22/18	1
	UT-GBC	UT-RFC	UT-FIF-180318	COVE CREEK	Fire - Wildfire	E-64	ENGINE - T6 - HURRICANE FD - BRUSH 47 (CALL WASHINGTON COUNTY FIRE WARDEN) (UT-CDC)	7/28/18	8/1/18	5
	UT-GBC	UT-CDC	UT-SWS-000616	OAK VALLEY	Fire - Wildfire	E-1	ENGINE - T6 - HURRICANE FD - BRUSH 47 (CALL WASHINGTON COUNTY FIRE WARDEN) (UT-CDC)	8/6/18	8/8/18	3
	UT-GBC	NV-CNC	NV-BMD-020073	2018 BMD SUPPORT	Preparedness/Preposition	E-25	ENGINE - T6 - HURRICANE FD - BRUSH 47 (CALL WASHINGTON COUNTY FIRE WARDEN) (UT-CDC)	8/17/18	9/1/18	16
	UT-GBC	NV-EIC	NV-EKD-010311	UNION PASS	Fire - Wildfire	E-2	ENGINE - T6 - HURRICANE FD - BRUSH 47 (CALL WASHINGTON COUNTY FIRE WARDEN) (UT-CDC)	8/18/18	8/21/18	4
	CA-OSCC	CA-OSCC	CA-OSC-000040	OSC 2018 PREPOSITION	Preparedness/Preposition	E-262	ENGINE - T6 - HURRICANE FD - BRUSH 47 (CALL WASHINGTON COUNTY FIRE WARDEN) (UT-CDC)	11/9/18	11/10/18	2
	CA-OSCC	CA-LPCC	CA-LPF-000007	CY18 LOS PADRES NF-OSC SUPPORT	Preparedness/Preposition	E-17	ENGINE - T6 - HURRICANE FD - BRUSH 47 (CALL WASHINGTON COUNTY FIRE WARDEN) (UT-CDC)	11/10/18	11/19/18	10
ENGINE - T6 - HURRICANE FD - UNIT # 30802 - BRUSH 44	UT-GBC	UT-CDC	UT-SWS-000009	DEEP CREEK	Fire - Wildfire	E-6	ENGINE - T6 - HURRICANE FD - UNIT # 30802 - BRUSH 44 (CALL SOUTHWEST STATE FMO) (UT-CDC)	1/2/18	1/8/18	7
	UT-GBC	UT-CDC	UT-SWS-000616	OAK VALLEY	Fire - Wildfire	E-2	ENGINE - T6 - HURRICANE FD - UNIT # 30802 - BRUSH 44 (CALL SOUTHWEST STATE FMO) (UT-CDC)	8/6/18	8/7/18	2
WATER TENDER - SUPPORT - T1 - HURRICANE FD - T47	UT-GBC	UT-CDC	AZ-ASD-000330	MOKAAC	Fire - Wildfire	E-2	WATER TENDER - SUPPORT - T1 - HURRICANE FD - T47 (CALL WASHINGTON COUNTY FIRE WARDEN - HURRICANE, UT) (UT-CDC)	7/9/18	7/16/18	8

Santa Clara/Ivins Fire Department

Resource Name	Inc GACC	Inc Disp	Inc Number	Inc Name	Inc Type	Req Number	Assignment Name	Mob ETD	Demob ETA	Days Assigned
ENGINE - T6 - SANTA CLARA-IVINS FD - B-33	UT-GBC	UT-CDC	UT-DIF-000265	WEST VALLEY	Fire - Wildfire	E-16	ENGINE - T6 - SANTA CLARA-IVINS FD - B-33 (LIC# 214199EX CALL SOUTHWEST STATE FMO) (UT-CDC)	6/28/18	7/7/18	10
	UT-GBC	UT-MFC	UT-MLF-008112	2018 MANTI-LASAL SEVERITY	Preparedness/Preposition	E-6	ENGINE - T6 - SANTA CLARA-IVINS FD - B-33 (LIC# 214199EX CALL SOUTHWEST STATE FMO) (UT-CDC)	7/15/18	7/30/18	16
	UT-GBC	NV-EIC	NV-EKD-010229	GOOSE CREEK	Fire - Wildfire	E-134	ENGINE - T6 - SANTA CLARA-IVINS FD - B-33 (LIC# 214199EX CALL SOUTHWEST STATE FMO) (UT-CDC)	8/3/18	8/9/18	7
	UT-GBC	ID-CIC	ID-SCF-018152	RABBIT FOOT	Fire - Wildfire	E-118	ENGINE - T6 - SANTA CLARA-IVINS FD - B-33 (LIC# 214199EX CALL SOUTHWEST STATE FMO) (UT-CDC)	8/9/18	8/9/18	1
	UT-GBC	NV-EIC	NV-EIC-100063	2018 NV-EIC GACC SUPPORT	Preparedness/Preposition	E-138	ENGINE - T6 - SANTA CLARA-IVINS FD - B-33 (LIC# 214199EX CALL SOUTHWEST STATE FMO) (UT-CDC)	8/22/18	9/6/18	16
	UT-GBC	NV-EIC	NV-ECFX-010299	SOUTH SUGARLOAF	Fire - Wildfire	E-175	ENGINE - T6 - SANTA CLARA-IVINS FD - B-33 (LIC# 214199EX CALL SOUTHWEST STATE FMO) (UT-CDC)	8/25/18	8/26/18	2
	UT-GBC	NV-EIC	NV-ECFX-010340	OWL CREEK	Fire - Wildfire	E-2	ENGINE - T6 - SANTA CLARA-IVINS FD - B-33 (LIC# 214199EX CALL SOUTHWEST STATE FMO) (UT-CDC)	8/30/18	9/1/18	3
	UT-GBC	NV-EIC	NV-ECFX-010351	KITTRIDGE	Fire - Wildfire	E-1	ENGINE - T6 - SANTA CLARA-IVINS FD - B-33 (LIC# 214199EX CALL SOUTHWEST STATE FMO) (UT-CDC)	9/2/18	9/2/18	1

ENGINE - T3 - SANTA CLARA-IVINS FD - E-33	UT-GBC	UT-MFC	UT-MLF-008089	TRAIL MOUNTAIN	Fire - Wildfire	E-4	ENGINE - T3 - SANTA CLARA-IVINS FD - E-33 (LIC# 37682EX CALL SOUTHWEST STATE FMO) (UT-CDC)	6/7/18	6/22/18	16
	UT-GBC	UT-CDC	UT-SWS-000266	DRY CANYON	Fire - Wildfire	E-1	ENGINE - T3 - SANTA CLARA-IVINS FD - E-33 (LIC# 37682EX CALL SOUTHWEST STATE FMO) (UT-CDC)	6/27/18	7/5/18	9
	UT-GBC	ID-SCC	ID-SCC-000020	2018 SCC GACC SUPPORT	Preparedness/Preposition	E-8	ENGINE - T3 - SANTA CLARA-IVINS FD - E-33 (LIC# 37682EX CALL SOUTHWEST STATE FMO) (UT-CDC)	7/13/18	7/20/18	8
	UT-GBC	ID-SCC	ID-TFD-000185	SPUD BUTTE	Fire - Wildfire	E-2	ENGINE - T3 - SANTA CLARA-IVINS FD - E-33 (LIC# 37682EX CALL SOUTHWEST STATE FMO) (UT-CDC)	7/16/18	7/17/18	2
	UT-GBC	ID-SCC	ID-TFD-000202	DOG CREEK	Fire - Wildfire	E-18	ENGINE - T3 - SANTA CLARA-IVINS FD - E-33 (LIC# 37682EX CALL SOUTHWEST STATE FMO) (UT-CDC)	7/17/18	7/20/18	4
	UT-GBC	ID-SCC	ID-SCC-000020	2018 SCC GACC SUPPORT	Preparedness/Preposition	E-29	ENGINE - T3 - SANTA CLARA-IVINS FD - E-33 (LIC# 37682EX CALL SOUTHWEST STATE FMO) (UT-CDC)	7/20/18	7/22/18	3
	UT-GBC	NV-EIC	NV-DVT-010179	OWYHEE	Fire - Wildfire	E-30	ENGINE - T3 - SANTA CLARA-IVINS FD - E-33 (LIC# 37682EX CALL SOUTHWEST STATE FMO) (UT-CDC)	7/22/18	7/24/18	3
	UT-GBC	ID-SCC	ID-SCC-000020	2018 SCC GACC SUPPORT	Preparedness/Preposition	E-47	ENGINE - T3 - SANTA CLARA-IVINS FD - E-33 (LIC# 37682EX CALL SOUTHWEST STATE FMO) (UT-CDC)	7/24/18	8/1/18	9
	UT-GBC	ID-SCC	ID-TFD-000226	BRUNEAU	Fire - Wildfire	E-18	ENGINE - T3 - SANTA CLARA-IVINS FD - E-33 (LIC# 37682EX CALL SOUTHWEST STATE FMO) (UT-CDC)	7/25/18	8/1/18	8
	UT-GBC	ID-SCC	ID-SCC-000020	2018 SCC GACC SUPPORT	Preparedness/Preposition	E-76	ENGINE - T3 - SANTA CLARA-IVINS FD - E-33 (LIC# 37682EX CALL SOUTHWEST STATE FMO) (UT-CDC)	8/1/18	8/4/18	4
	UT-GBC	ID-SCC	ID-BS-000247	SHARPS	Fire - Wildfire	E-82	ENGINE - T3 - SANTA CLARA-IVINS FD - E-33 (LIC# 37682EX CALL SOUTHWEST STATE FMO) (UT-CDC)	8/1/18	8/4/18	4
	UT-GBC	NV-EIC	NV-EIC-100063	2018 NV-EIC GACC SUPPORT	Preparedness/Preposition	E-117	ENGINE - T3 - SANTA CLARA-IVINS FD - E-33 (LIC# 37682EX CALL SOUTHWEST STATE FMO) (UT-CDC)	8/4/18	8/9/18	6
	UT-GBC	NV-CNC	NV-WID-020074	2018 WID SUPPORT	Preparedness/Preposition	E-38	ENGINE - T3 - SANTA CLARA-IVINS FD - E-33 (LIC# 37682EX CALL SOUTHWEST STATE FMO) (UT-CDC)	8/14/18	8/30/18	17
	UT-GBC	NV-CNC	NV-WID-020304	NAVAJO PEAK	Fire - Wildfire	E-2	ENGINE - T3 - SANTA CLARA-IVINS FD - E-33 (LIC# 37682EX CALL SOUTHWEST STATE FMO) (UT-CDC)	8/16/18	8/16/18	1
	UT-GBC	NV-EIC	NV-ECFX-010299	SOUTH SUGARLOAF	Fire - Wildfire	E-57	ENGINE - T3 - SANTA CLARA-IVINS FD - E-33 (LIC# 37682EX CALL SOUTHWEST STATE FMO) (UT-CDC)	8/17/18	8/29/18	13
	UT-GBC	ID-BDC	ID-BOF-000362	2018 BOF FIRE SUPPORT	Preparedness/Preposition	E-74	ENGINE - T3 - SANTA CLARA-IVINS FD - E-33 (LIC# 37682EX CALL SOUTHWEST STATE FMO) (UT-CDC)	9/8/18	9/24/18	17
	ENGINE - T6 - SANTA CLARA-IVINS FD - B-34	UT-GBC	UT-CDC	UT-SWS-000009	DEEP CREEK	Fire - Wildfire	E-3	ENGINE - T6 - SANTA CLARA-IVINS FD - B-34 (LIC# 40920EX CALL SOUTHWEST STATE FMO) (UT-CDC)	1/2/18	1/3/18
WATER TENDER - SUPPORT - T2 - SANTA CLARA-IVINS FD - WT-31	UT-GBC	UT-CDC	UT-DIF-000265	WEST VALLEY	Fire - Wildfire	E-48	WATER TENDER - SUPPORT - T2 - SANTA CLARA-IVINS FD - WT-31 (CALL SOUTHWEST STATE FMO) (UT-CDC)	6/29/18	7/9/18	11

Southwest State - UDF

Resource Name	Inc GACC	Inc Disp	Inc Number	Inc Name	Inc Type	Req Number	Assignment Name	Mob ETD	Demob ETA	Days Assigned
ENGINE - T3 - DIAMOND VALLEY FD - E-112	UT-GBC	ID-SCC	ID-SCC-000020	2018 SCC GACC SUPPORT	Preparedness/Preposition	E-7	ENGINE - T3 - DIAMOND VALLEY FD - E-112 (LIC#508277EX CALL SOUTHWEST STATE FMO) (UT-CDC)	7/13/18	7/16/18	4
	UT-GBC	UT-RFC	UT-SCS-180419	HILL TOP	Fire - Wildfire	E-26	ENGINE - T3 - DIAMOND VALLEY FD - E-112 (LIC#508277EX CALL SOUTHWEST STATE FMO) (UT-CDC)	8/7/18	8/11/18	5
	UT-GBC	UT-MFC	UT-MLF-008333	COAL HOLLOW	Fire - Wildfire	E-139	ENGINE - T3 - DIAMOND VALLEY FD - E-112 (LIC#508277EX CALL SOUTHWEST STATE FMO) (UT-CDC)	8/11/18	8/25/18	15
	CA-ONCC	CA-GVCC	CA-TNF-000016	TNF FIRE SUPPORT	Preparedness/Preposition	E-6	ENGINE - T3 - DIAMOND VALLEY FD - E-112 (LIC#508277EX CALL SOUTHWEST STATE FMO) (UT-CDC)	9/4/18	9/19/18	16
ENGINE - T6 - HILDALE FD - B-1011	UT-GBC	UT-CDC	UT-SWS-000009	DEEP CREEK	Fire - Wildfire	E-4	ENGINE - T6 - HILDALE FD - B-1011 (LIC# 512906EX CALL SOUTHWEST STATE FMO) (UT-CDC)	1/2/18	1/3/18	2
ENGINE - T6 - KANAB FD - BRUSH 21	UT-GBC	NV-EIC	NV-EKD-010229	GOOSE CREEK	Fire - Wildfire	E-135	ENGINE - T6 - KANAB FD - BRUSH 21 (LIC# 61329EX CALL SOUTHWEST STATE FMO) (UT-CDC)	8/2/18	8/11/18	10
	UT-GBC	ID-CIC	ID-SCF-018152	RABBIT FOOT	Fire - Wildfire	E-212	ENGINE - T6 - KANAB FD - BRUSH 21 (LIC# 61329EX CALL SOUTHWEST STATE FMO) (UT-CDC)	8/17/18	9/2/18	17
ENGINE - T6 - UT-SWS - E662	UT-GBC	UT-MFC	UT-MLF-008333	COAL HOLLOW	Fire - Wildfire	E-246	ENGINE - T6 - UT-SWS - E662 (CALL STATE (UT FSSL) DUTY OFFICER - PANGUITCH, UT) (UT-CDC)	8/30/18	9/12/18	14
ENGINE - T6 - UT-SWS - E663	CA-OSCC	CA-OSCC	CA-OSC-000040	OSC 2018 PREPOSITION	Preparedness/Preposition	E-265	ENGINE - T6 - UT-SWS - E663 (CALL STATE (UT FSSL) DUTY OFFICER - CEDAR CITY, UT) (UT-CDC)	11/10/18	11/10/18	1
	CA-OSCC	CA-OSCC	CA-OSC-000040	OSC 2018 PREPOSITION	Preparedness/Preposition	E-265	ENGINE - T6 - UT-SWS - E663 (CALL STATE (UT FSSL) DUTY OFFICER - CEDAR CITY, UT) (UT-CDC)	11/10/18		17
	CA-OSCC	CA-MVIC	CA-CNF-002175	2018 CNF OSC SUPPORT	Preparedness/Preposition	E-28	ENGINE - T6 - UT-SWS - E663 (CALL STATE (UT FSSL) DUTY OFFICER - CEDAR CITY, UT) (UT-CDC)	11/10/18	11/19/18	10
ENGINE - T6 - UT-SWS - E664	UT-GBC	UT-CDC	UT-SPA-000298	PIPE SPRINGS	Fire - Wildfire	E-1	ENGINE - T6 - UT-SWS - E664 (CALL STATE (UT FSSL) DUTY OFFICER - ORDERVILLE, UT) (UT-CDC)	1/1/18	1/1/18	1
ENGINE - T6 - UT-SWS - E665	UT-GBC	UT-CDC	UT-DIF-000265	WEST VALLEY	Fire - Wildfire	E-70	ENGINE - T6 - UT-SWS - E665 (CALL STATE (UT FSSL) DUTY OFFICER - ST. GEORGE, UT) (UT-CDC)	6/27/18	6/28/18	2
	CA-ONCC	CA-BTCC	CA-BTU-016737	CAMP	Fire - Wildfire	E-494	ENGINE - T6 - UT-SWS - E665 (CALL STATE (UT FSSL) DUTY OFFICER - ST. GEORGE, UT) (UT-CDC)	11/9/18	11/21/18	13
PICKUP - 4x4 - 2006 Chevrolet 259012 98698EX Standard - Beaver FD - U-11	UT-GBC	UT-RFC	UT-FIF-180318	COVE CREEK	Fire - Wildfire	E-26	PICKUP - 4x4 - 2006 Chevrolet 259012 98698EX Standard - Beaver FD - U-11 (CALL SOUTHWEST STATE FMO) (UT-CDC)	7/21/18	8/8/18	19
TRAILER - UT-SWS - STRUCTURE PROTECTION - LIC. #500203EX	UT-GBC	UT-CDC	UT-DIF-000265	WEST VALLEY	Fire - Wildfire	E-46	TRAILER - UT-SWS - STRUCTURE PROTECTION - LIC. #500203EX (CALL SWS DUTY OFFICER) (UT-CDC)	6/28/18	7/16/18	19
WATER TENDER - SUPPORT - T1 - BEAVER FD - 4V618	UT-GBC	UT-CDC	UT-CCD-000474	HORSE VALLEY	Fire - Wildfire	E-14	WATER TENDER - SUPPORT - T1 - BEAVER FD - 4V618 (LIC# 208618EX - CALL SOUTHWEST STATE FMO) (UT-CDC)	7/20/18	7/22/18	3
WATER TENDER - SUPPORT - T1 - BEAVER FD - T-14	UT-GBC	UT-CDC	UT-CCD-000474	HORSE VALLEY	Fire - Wildfire	E-13	WATER TENDER - SUPPORT - T1 - BEAVER FD - T-14 (CALL SOUTHWEST STATE FMO) (UT-CDC)	7/20/18	7/22/18	3
WATER TENDER - SUPPORT - T2 - NORTHWESTERN FD - T-171	UT-GBC	UT-CDC	UT-DIF-000265	WEST VALLEY	Fire - Wildfire	E-6	WATER TENDER - SUPPORT - T2 - NORTHWESTERN FD - T-171 (LIC#510664EX CALL SOUTHWEST STATE FMO) (UT-CDC)	6/28/18	7/9/18	12

Washington City Fire Department

Resource Name	Inc GACC	Inc Disp	Inc Number	Inc Name	Inc Type	Req Number	Assignment Name	Mob ETD	Demob ETA	Days Assigned
ENGINE - T1 - WASHINGTON CITY FD - E-61	UT-GBC	UT-NUC	UT-UWF-000892	BALD MOUNTAIN	Fire - Wildfire	E-12	ENGINE - T1 - WASHINGTON CITY FD - E-61 (LIC# 523090EX CALL SOUTHWEST STATE FMO) (UT-CDC)	9/14/18	9/18/18	5
	UT-GBC	UT-NUC	UT-UWF-000971	POLE CREEK	Fire - Wildfire	E-282	ENGINE - T1 - WASHINGTON CITY FD - E-61 (LIC# 523090EX CALL SOUTHWEST STATE FMO) (UT-CDC)	9/18/18	9/28/18	11
ENGINE - T6 - WASHINGTON CITY FD - B-61	UT-GBC	UT-CDC	UT-SWS-000009	DEEP CREEK	Fire - Wildfire	E-1	ENGINE - T6 - WASHINGTON CITY FD - B-61 (LIC# 513868 EX CALL SOUTHWEST STATE FMO) (UT-CDC)	1/2/18	1/3/18	2

Utah Division Forestry Fire State Lands

Resource Name	Inc GACC	Inc Disp	Inc Number	Inc Name	Inc Type	Req Number	Assignment Name	Mob ETD	Demob ETA	Days Assigned
Wasatch County Dozer #290	UT-GBC	UT-NUC	UT-NE5-200383	DOLLAR RIDGE	Fire - Wildfire	E-170	Wasatch County Dozer #290 (UT-NUC)	7/8/18	7/8/18	1
Wasatch County Truck #217	UT-GBC	UT-NUC	UT-NE5-200383	DOLLAR RIDGE	Fire - Wildfire	E-183	Wasatch County Truck #217 (UT-NUC)	7/8/18	7/8/18	1

5 & 10 YEAR AVERAGES

Arizona Strip BLM	Years	Average Fires	Average Acres
5 Year	2014-2018	42	1,333
10 Year	2009-2018	64	8,416

Color Country BLM	Years	Average Fires	Average Acres
5 Year	2014-2018	95	2,389
10 Year	2009-2018	136	7,119

Dixie National Forest	Years	Average Fires	Average Acres
5 Year	2014-2018	41	16,440
10 Year	2009-2018	51	11,475

National Parks	Years	Average Fires	Average Acres
5 Year	2014-2018	18	286
10 Year	2009-2018	17	716

Southern Paiute Agency	Years	Average Fires	Average Acres
5 Year	2014-2018	3	24
10 Year	2009-2018	6	755

UT Southwest State	Years	Average Fires	Average Acres
5 Year	2014-2018	77	1,936
10 Year	2009-2018	85	2,108

SDA-Forest Service PERSONNEL EMPLOYED ON WILDFIRE PRESUPPRESSION AND SUPPRESSION ACTIVITIES	UNIT Dixie National Forest CALENDAR YEAR 2018
--	--

INSTRUCTIONS:

1. Data for items 1a, 1b, and 2b should be taken from planning and budget records in the Supervisor's Office.
2. Items 1c, 1d, 2b, and 2c may be obtained from actual records in the S.O. or from the Ranger District. If obtained from the Ranger having intimate knowledge on use of his personnel, these items may be estimated. Complete accuracy is not required.
3. Item 3 may be estimated where large numbers of casuals are employed. Since each reemployment counts as a new employment, sufficient accuracy can be obtained by sample counts and measurement of time slips.

ITEM NO.	ITEM	NUMBER	
		SUB-TOTAL	TOTAL
1.	Regular appointed personnel		
	a. Full-time fire management (20 pay periods or more)	23	
	b. Part-time fire management	30	
	c. Others used on presuppression sometime during year	10	
	d. Others used on suppression (exclude those reported under a, b, or c)	19	
	e. Total (a + b + c + d)		82
2.	Seasonal or short-term personnel		
	a. Regular fire control (crews, firefighters, patrol, lookouts, etc.)	54	
	b. Others (BD, KV, BR, R&T, etc.) who spent time on fire control work	9	
	c. Emergency firefighters (exclude those reported under a or b)	8	
	d. Total (a + b + c)		71
3.	Total number of casuals employed on fire suppression (Each reemployment counts as an employment)		47
4.	Number of casuals (included in Item 3) employed for first time (Ranger's estimate is adequate)	15	
5.	GRAND TOTAL (1e + 2d + 3)		200

REMARKS (if necessary)

Includes Cedar City IHC as well as regular Forest Service resources.

SUBMITTED BY (Signature) <u> /S/ Kevin P. Greenhalgh</u>	TITLE Forest Fire Management Officer
--	--

Previous edition is obsolete.